



ЗИН РАН

NEW IN BENTHIC FAUNA OF THE CHUKCHI SEA

***Marine Research Laboratory of the Zoological Institute RAS
St. Petersburg***

General results of taxonomic processing of main zoobenthos groups from “RUSALCA” collections in 2005-2013

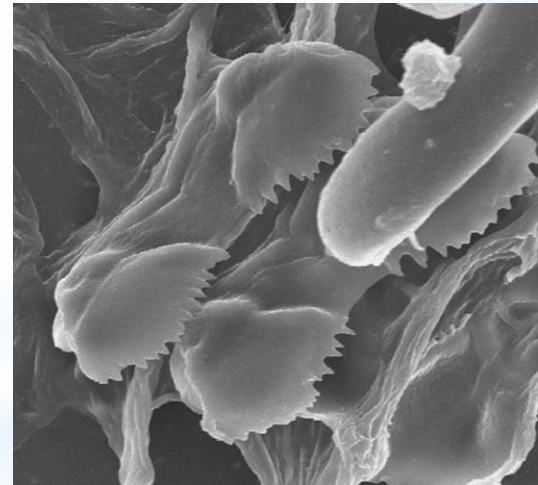
- * Polychaetes - 205 species, including 27 new for the Chukchi Sea
- * Amphipods - 226 species, including 14 new for the Chukchi Sea
- * Other crustations - 191 species, including 18 new for the Chukchi Sea
- * Gastropods - 134 species, including 22 new for the Chukchi Sea
- * Other mollusks - 63 species, including 5 new for the Chukchi Sea
- * Bryozoans - 204 species, including 9 new for the Chukchi Sea
- * Echinoderms - 53 species, including 2 new for the Chukchi Sea

❖ *Cylichna valida* (Leche, 1878) stat.nov.
(Opisthobranchia: Cylichnidae) from the Arctic
seas with notes on *Cylichna occulta* species group
and description of its rachidian teeth morphology

E.M. Chaban



Cylichna valida



rachidian teeth

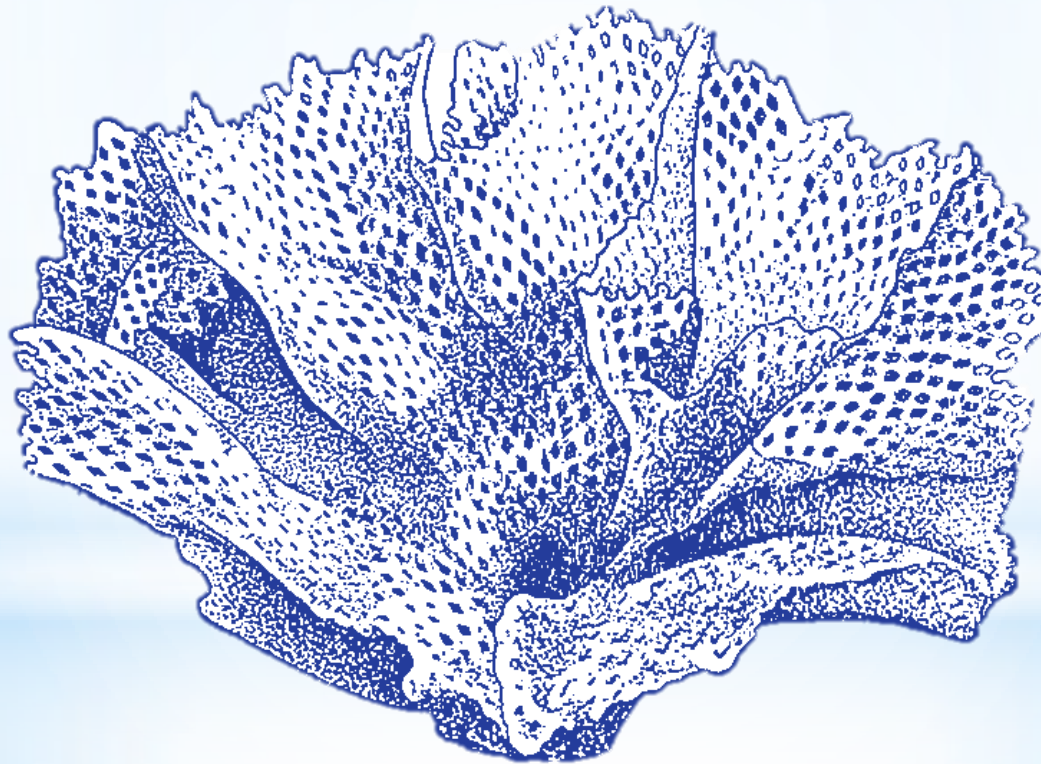
❖ New species of *Chaetozone* genus

S. Yu. Gagaev

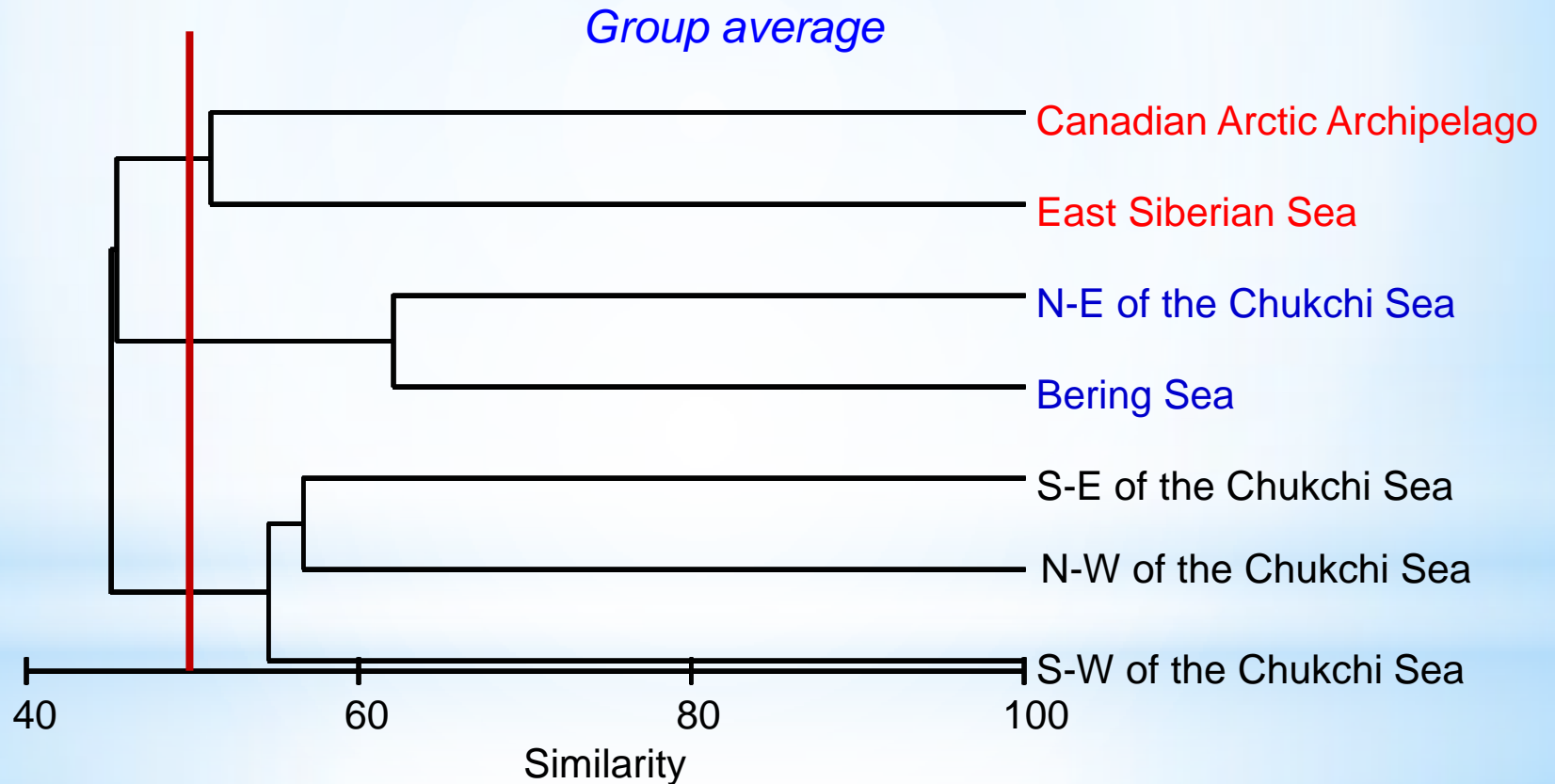


❖ Diversity and biogeographic composition of bryozoan fauna of the Chukchi Sea

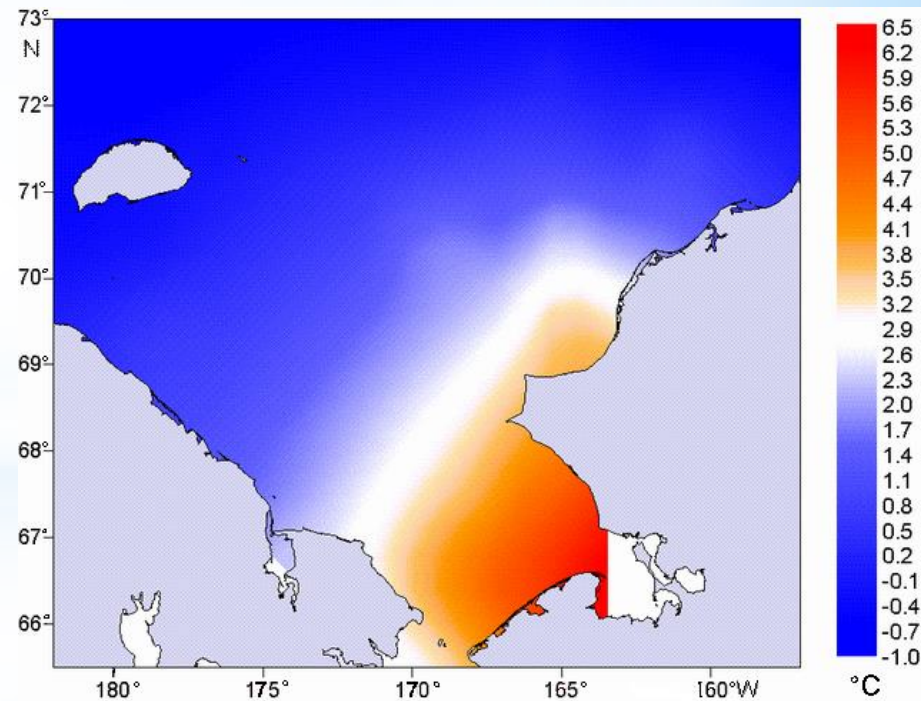
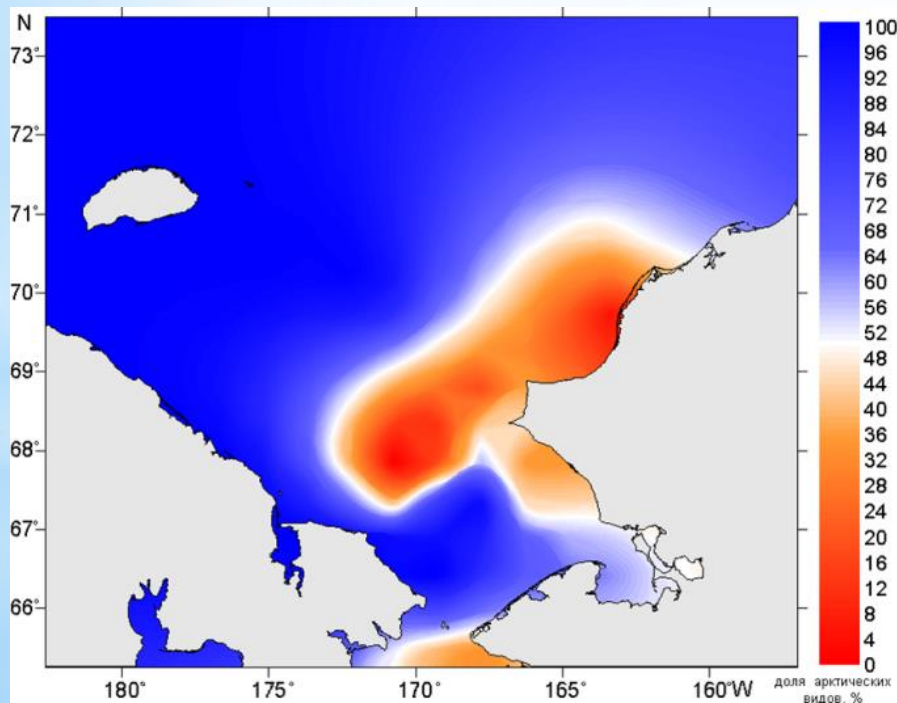
N.V. Denisenko



Similarity of the Chukchi Sea bryozoan fauna with fauna of neighbouring seas and areas



Biogeographic boundary between boreal and transitional zones (white line, left) according to bryozoan fauna distribution (on data 2004-2012) and near bottom water temperature (right) in the Chukchi Sea



❖ Growth rate of bivalve mollusks with different type of feeding

S.G. Denisenko, V.V. Skvortsov

suspension feeder (filterer)



Serripes groenlandicus

deposit feeder (gatherer)



Yoldia hyperborea

Growth curves (left) and growth success (right) of study mollusks

