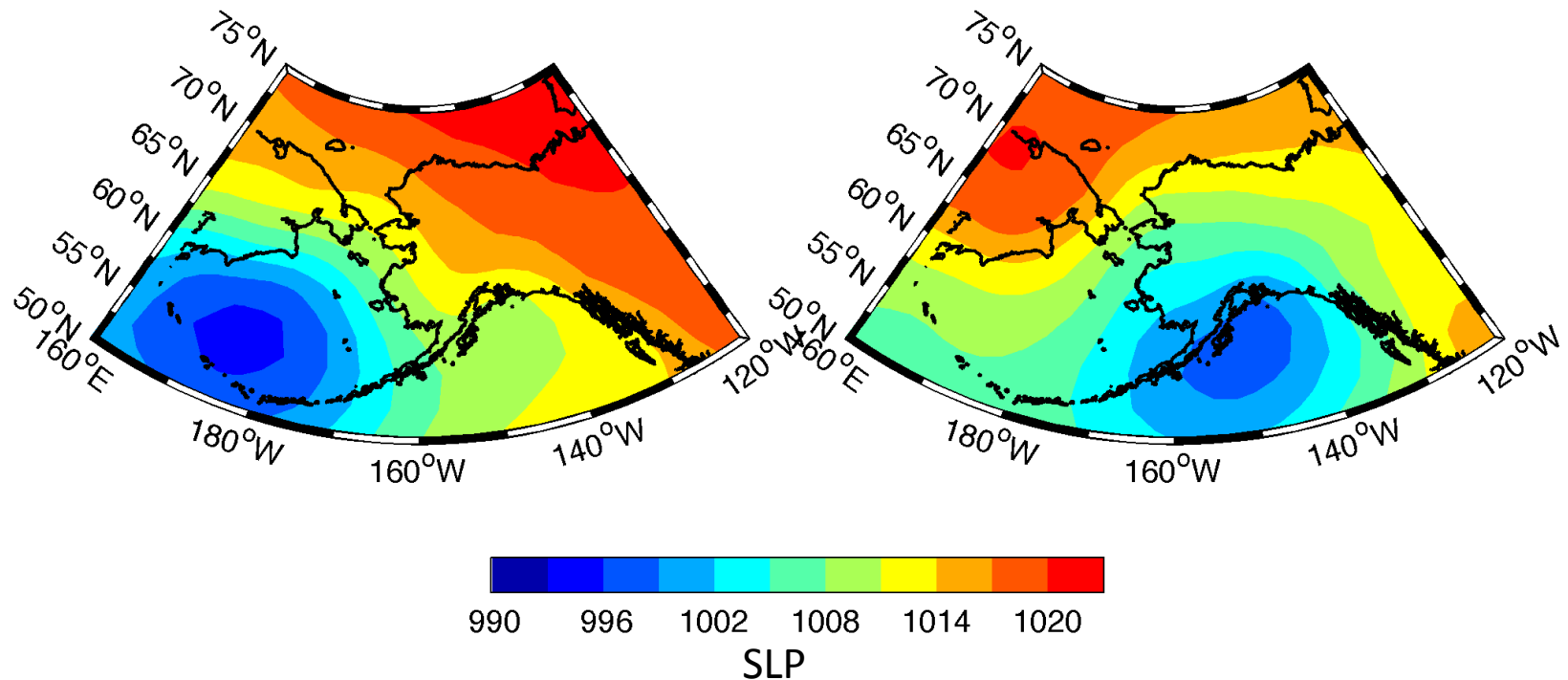


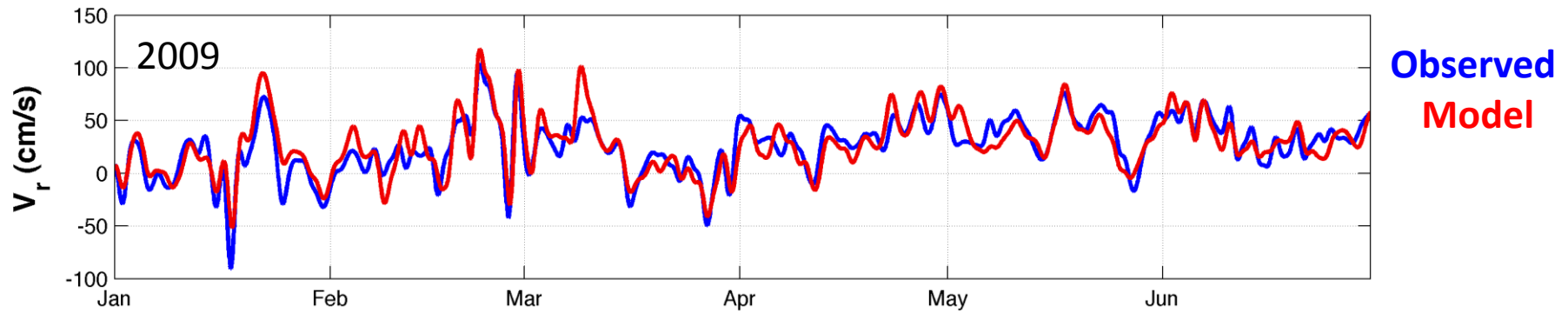
Remote forcing of Bering Strait transport

1. **Synoptic time scales: Continental Shelf Waves**
2. **Inter-annual time scales: Along-strait pressure head**

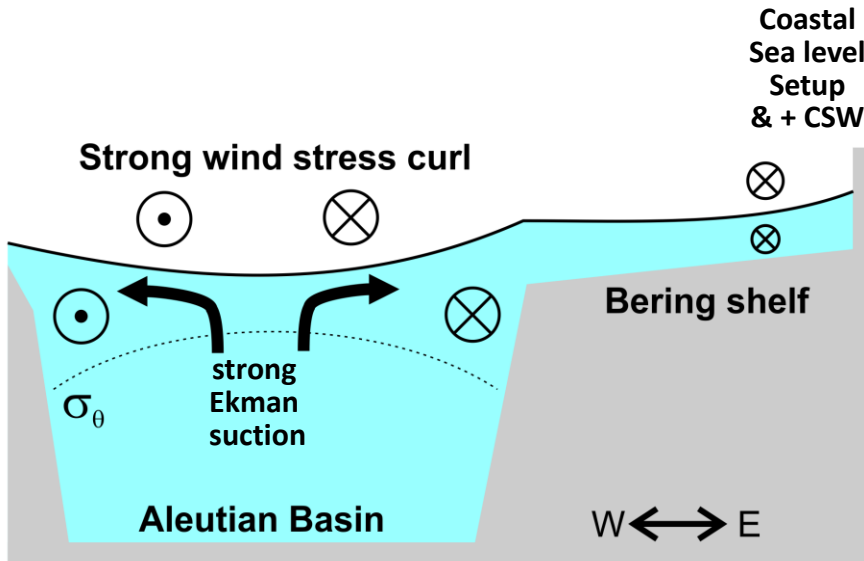


These two types of pressure systems result in **OPPOSITE** effects on the Bering Strait transport at synoptic and inter-annual time scales

1. Synoptic time scales: Continental Shelf Waves

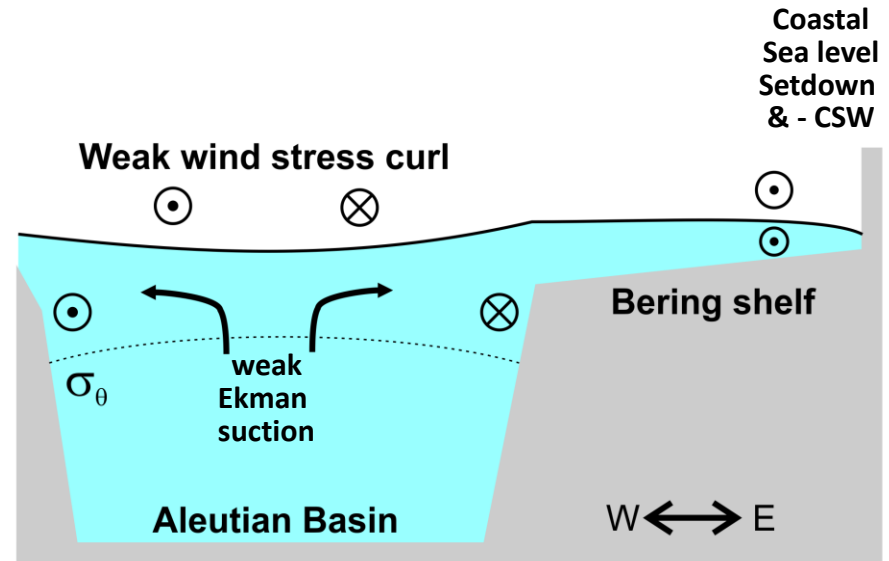


A conceptual model



Storms over the Bering Sea

Bering Strait transport
Decreases at annual time scales
Increases at daily time scales



Storms over the Gulf of Alaska

Bering Strait transport
Increases at annual time scales
Decreases at daily time scales