

PUBLIKATIONER
FRA
DET DANSKE METEOROLOGISKE INSTITUT
CHARLOTTENLUND

ÅRBØGER

ISFORHOLDENE I DE ARKTISKE HAVE
THE STATE OF THE ICE IN THE ARCTIC SEAS



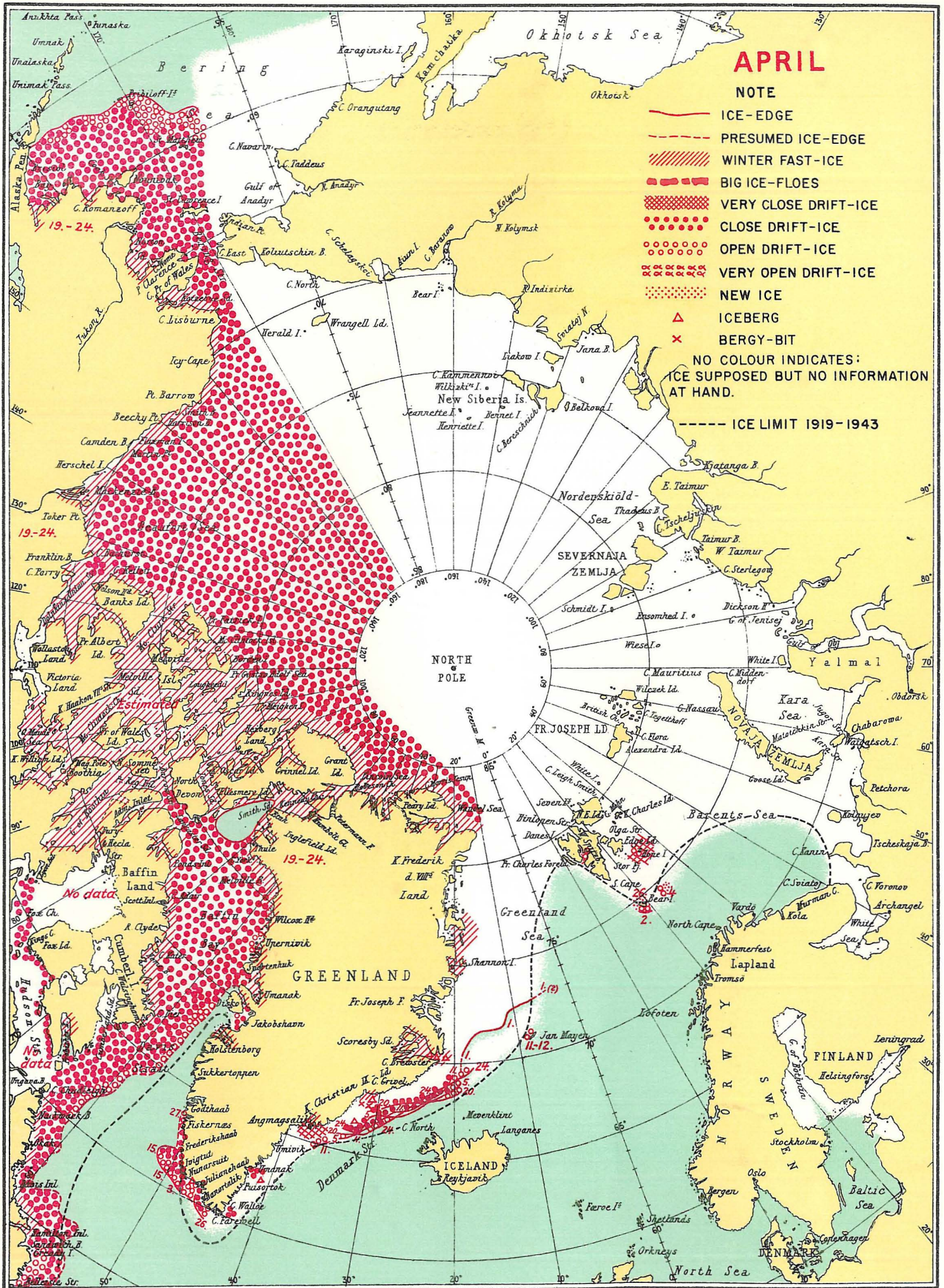
TILLÆG TIL NAUTISK-METEOROLOGISK ÅRBOG 1956
APPENDIX TO THE NAUTICAL-METEOROLOGICAL ANNUAL 1956



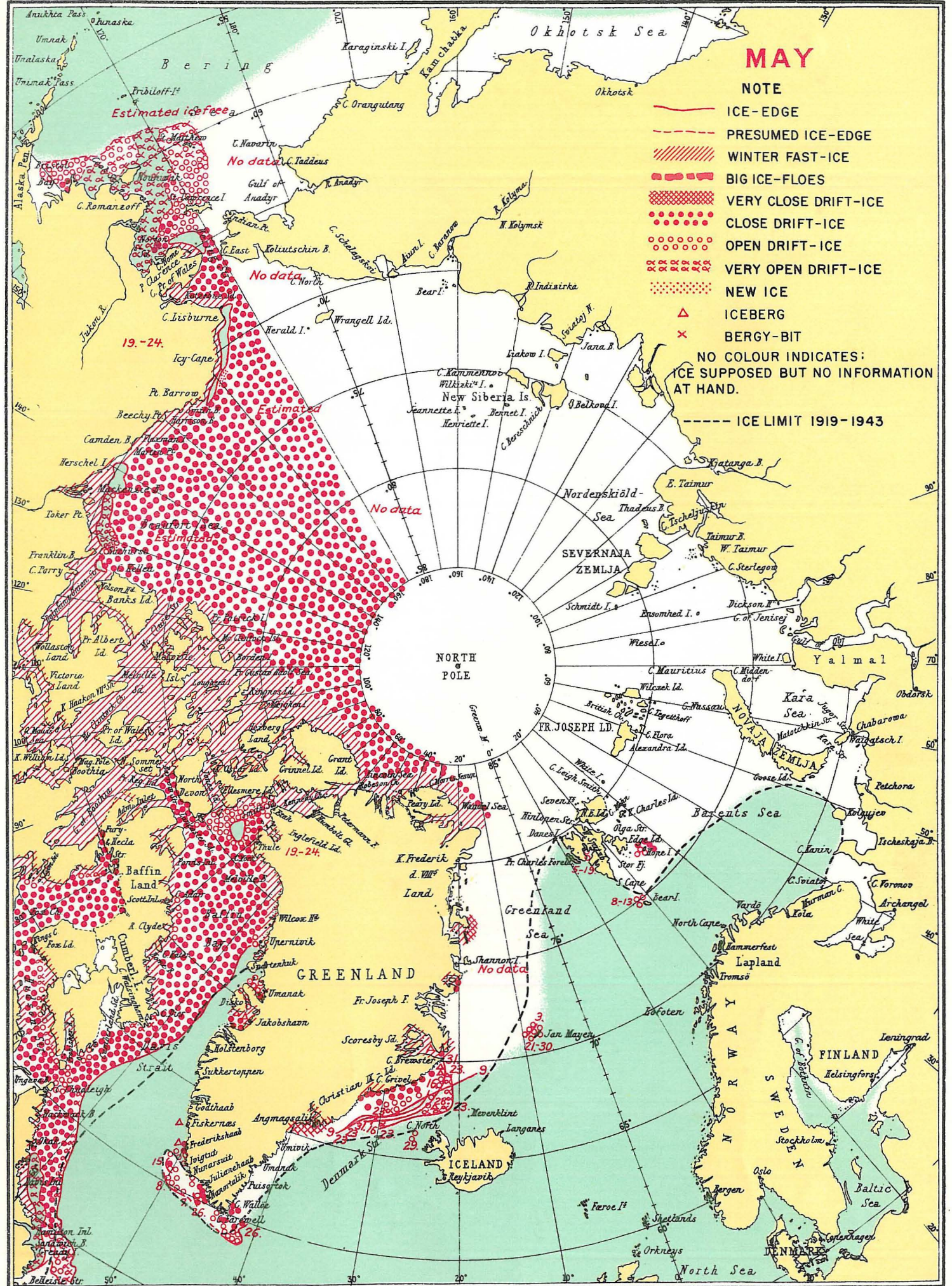
TRYKT I HØRSHOLM BOGTRYKKERI

1959

INFORMATION RECEIVED CONCERNING THE ICE, 1956.



INFORMATION RECEIVED CONCERNING THE ICE, 1956.

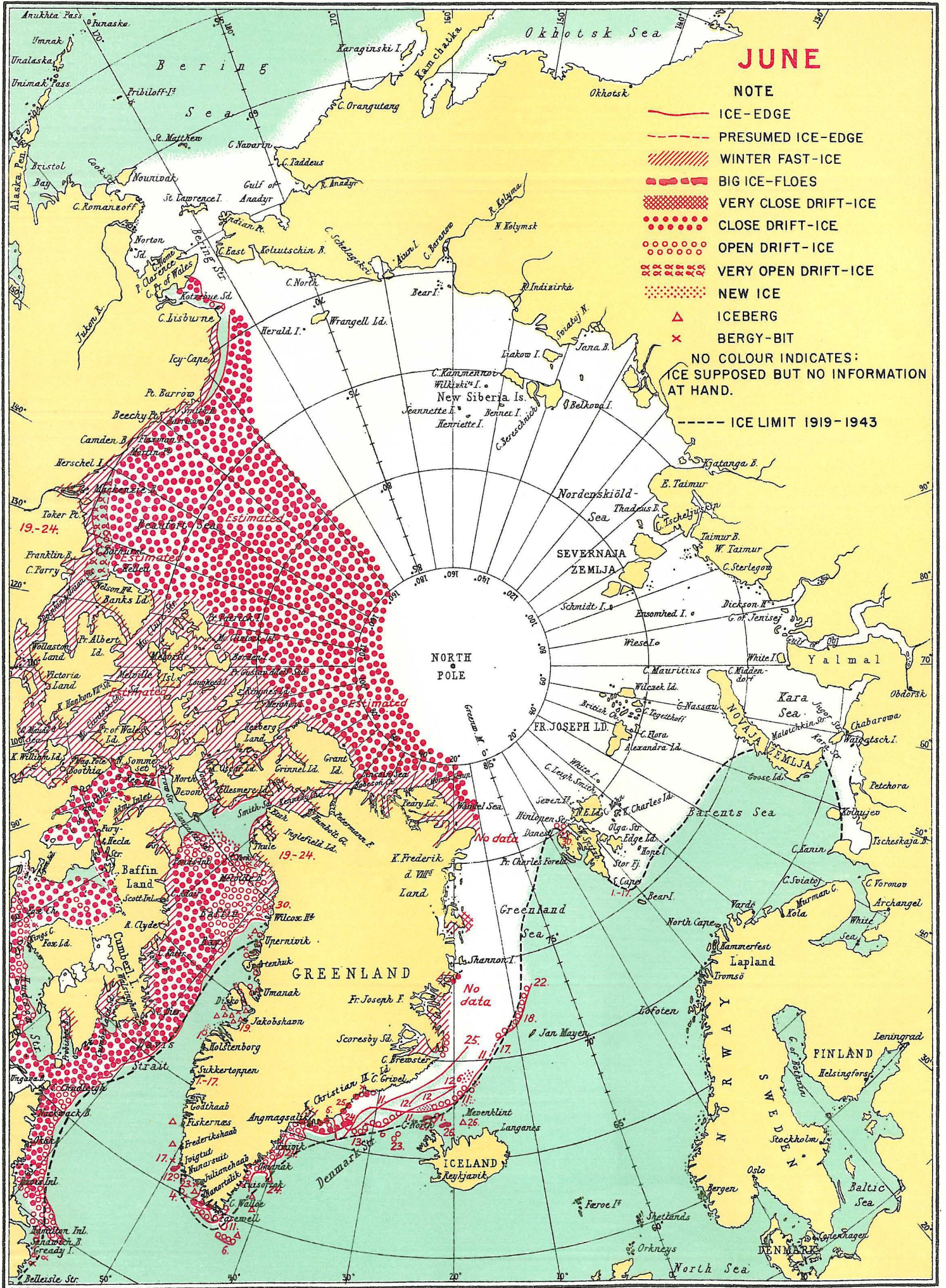


INFORMATION RECEIVED CONCERNING THE ICE, 1956.

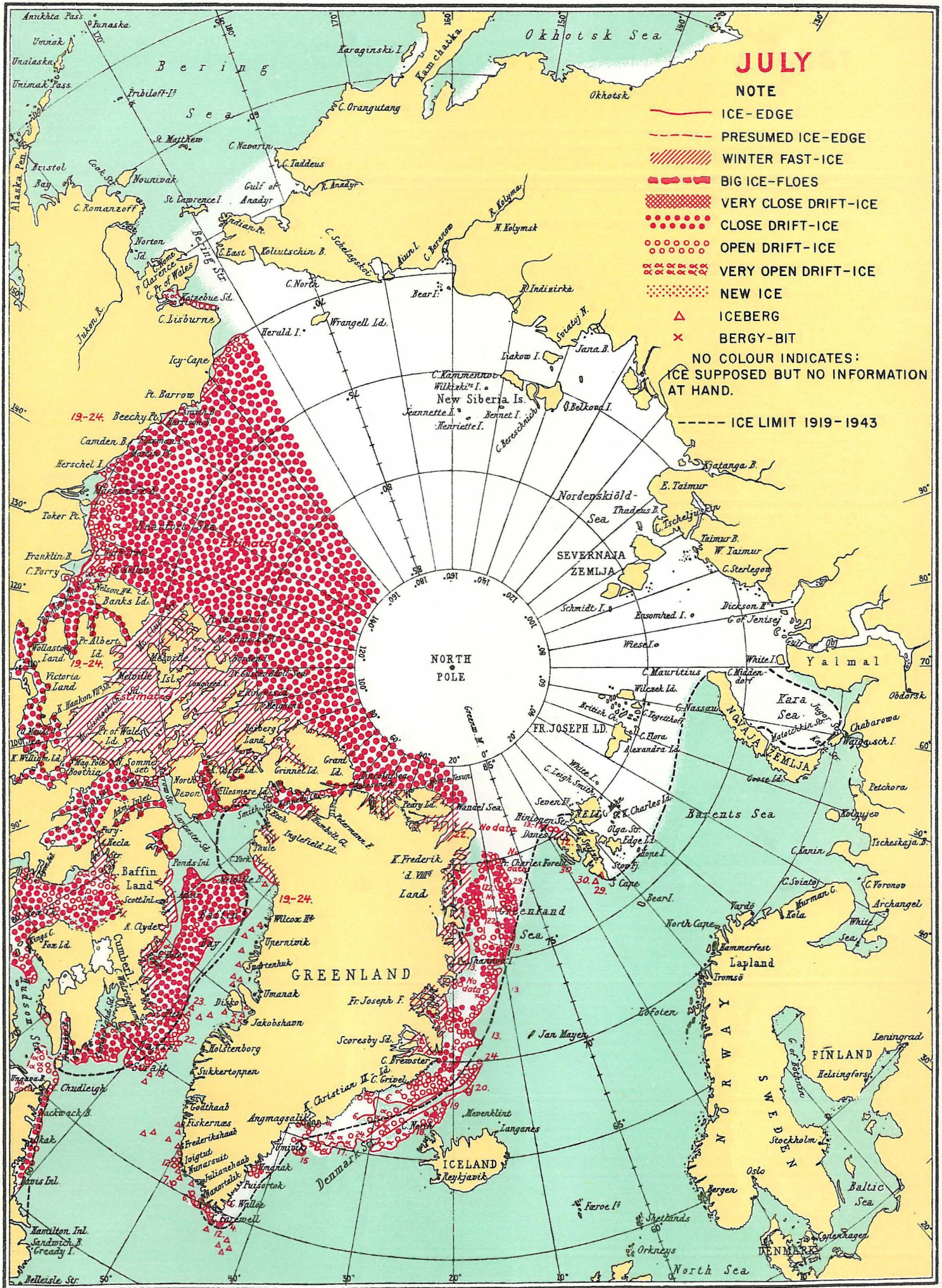
JUNE

NOTE

- ICE-EDGE
 - - - - PRESUMED ICE-EDGE
 - ▨▨▨▨▨▨ WINTER FAST-ICE
 - BIG ICE-FLOES
 - VERY CLOSE DRIFT-ICE
 - CLOSE DRIFT-ICE
 - OPEN DRIFT-ICE
 - VERY OPEN DRIFT-ICE
 - NEW ICE
 - △ ICEBERG
 - × BERGY-BIT
- NO COLOUR INDICATES:
ICE SUPPOSED BUT NO INFORMATION
AT HAND.
- - - - ICE LIMIT 1919-1943



INFORMATION RECEIVED CONCERNING THE ICE, 1956.



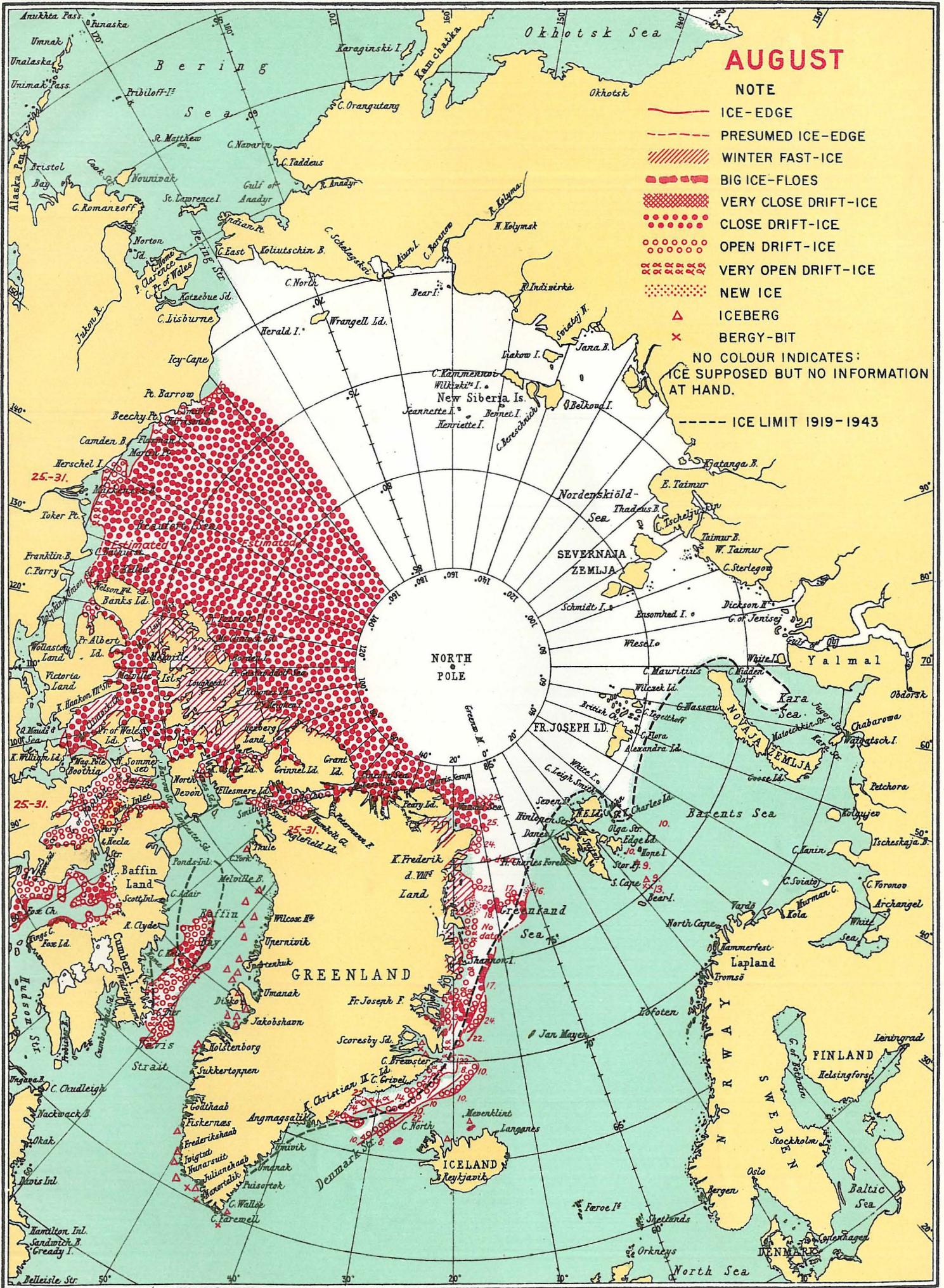
JULY

NOTE

- ICE-EDGE
 - PRESUMED ICE-EDGE
 - WINTER FAST-ICE
 - BIG ICE-FLOES
 - VERY CLOSE DRIFT-ICE
 - CLOSE DRIFT-ICE
 - OPEN DRIFT-ICE
 - VERY OPEN DRIFT-ICE
 - NEW ICE
 - △ ICEBERG
 - × BERGY-BIT
- NO COLOUR INDICATES:
ICE SUPPOSED BUT NO INFORMATION AT HAND.

--- ICE LIMIT 1919-1943

INFORMATION RECEIVED CONCERNING THE ICE, 1956.



AUGUST

NOTE

- ICE-EDGE
- PRESUMED ICE-EDGE
- WINTER FAST-ICE
- BIG ICE-FLOES
- VERY CLOSE DRIFT-ICE
- CLOSE DRIFT-ICE
- OPEN DRIFT-ICE
- VERY OPEN DRIFT-ICE
- NEW ICE

- △ ICEBERG
- × BERGY-BIT
- NO COLOUR INDICATES: ICE SUPPOSED BUT NO INFORMATION AT HAND.

----- ICE LIMIT 1919-1943