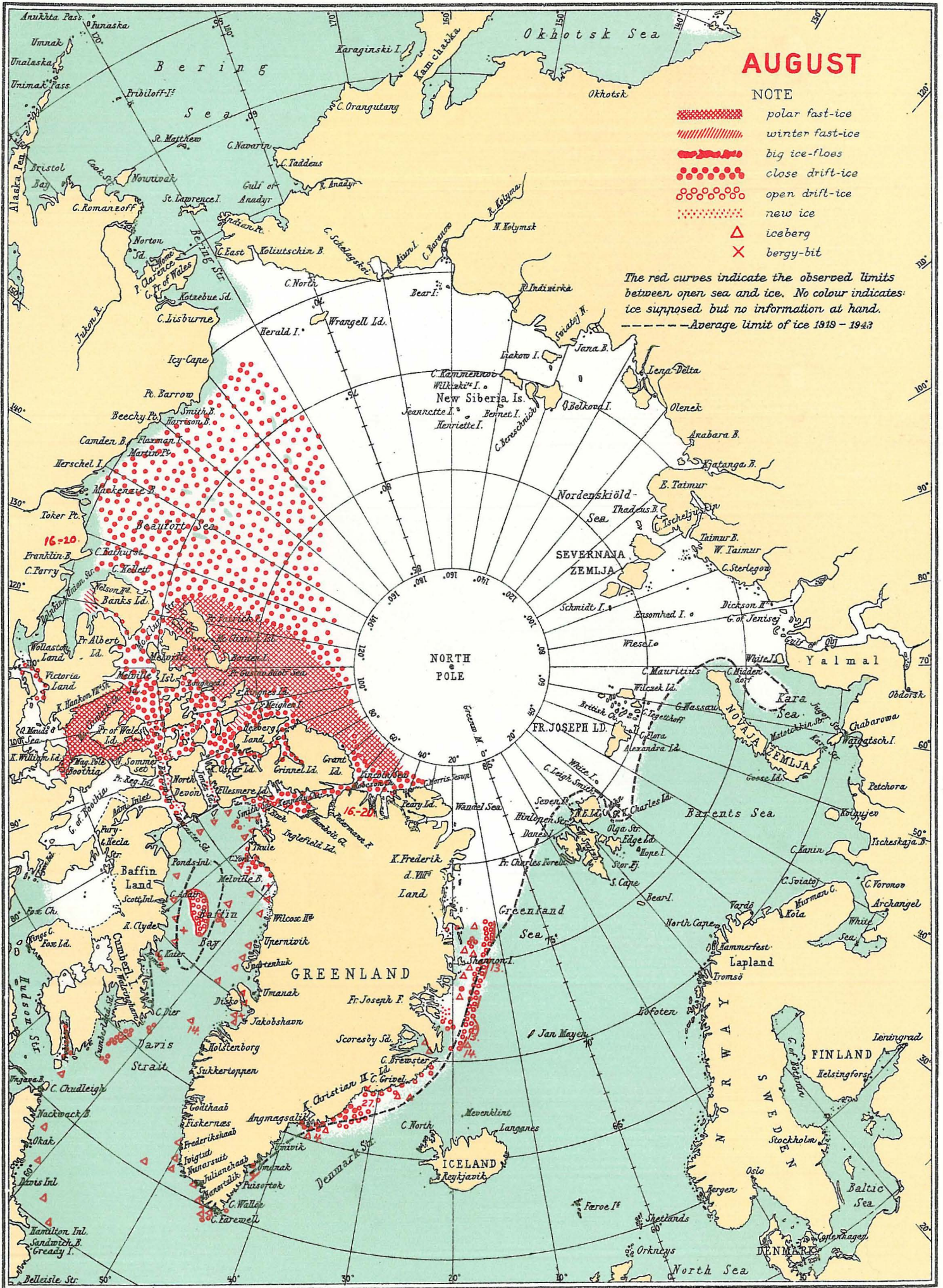


# INFORMATION RECEIVED CONCERNING THE ICE, 1953.



## AUGUST

### NOTE

-  polar fast-ice
-  winter fast-ice
-  big ice-floes
-  close drift-ice
-  open drift-ice
-  new ice
-  iceberg
-  bergy-bit

The red curves indicate the observed limits between open sea and ice. No colour indicates ice supposed but no information at hand.  
 -----Average limit of ice 1919 - 1943