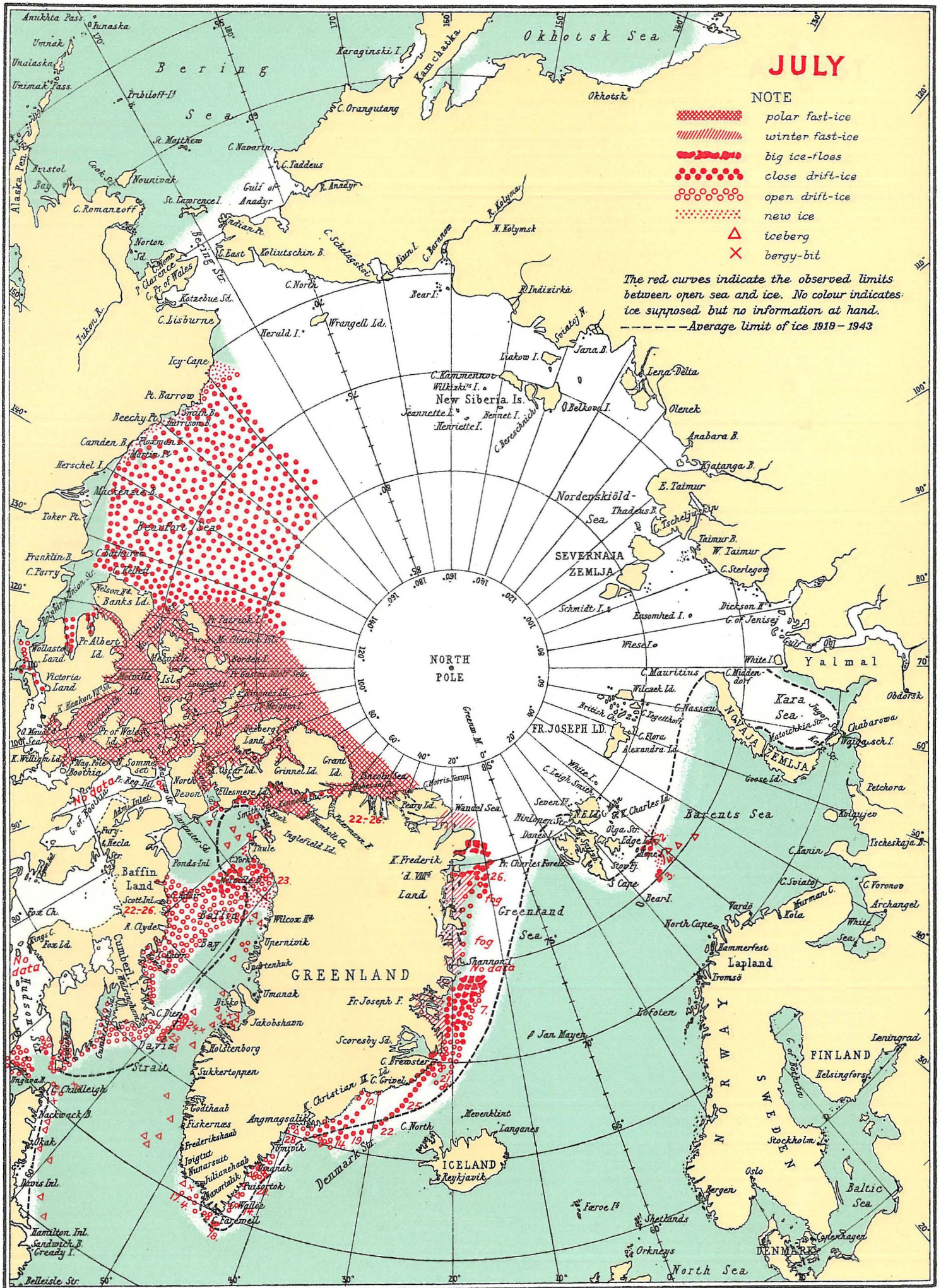


# INFORMATION RECEIVED CONCERNING THE ICE, 1953.



**JULY**

**NOTE**

-  polar fast-ice
-  winter fast-ice
-  big ice-floes
-  close drift-ice
-  open drift-ice
-  new ice
-  icebergs
-  bergy-bit

The red curves indicate the observed limits between open sea and ice. No colour indicates ice supposed but no information at hand.  
 ---Average limit of ice 1919-1943

NORTH  
POLE

GREENLAND

ICELAND

FINLAND

DENMARK

NORWAY

Denmark

No data

No data

No data

No data

No data

22-26

23

22-26

27-28

24

23

17-18

18

22-26

23

22-26

27-28

24

23

17-18

18

22-26

23

22-26

27-28

24

23

17-18

18

22-26

23

22-26

27-28

24

23

17-18

18

22-26

23

22-26

27-28

24

23

17-18

18

22-26

23

22-26

27-28

24

23

17-18

18

22-26

23

22-26

27-28

24

23

17-18

18

22-26

23

22-26

27-28

24

23

17-18

18

22-26

23

22-26

27-28

24

23

17-18

18

22-26

23

22-26

27-28

24

23

17-18

18

22-26

23

22-26

27-28

24

23

17-18

18

22-26

23

22-26

27-28

24

23

17-18

18

22-26

23

22-26

27-28

24

23

17-18

18