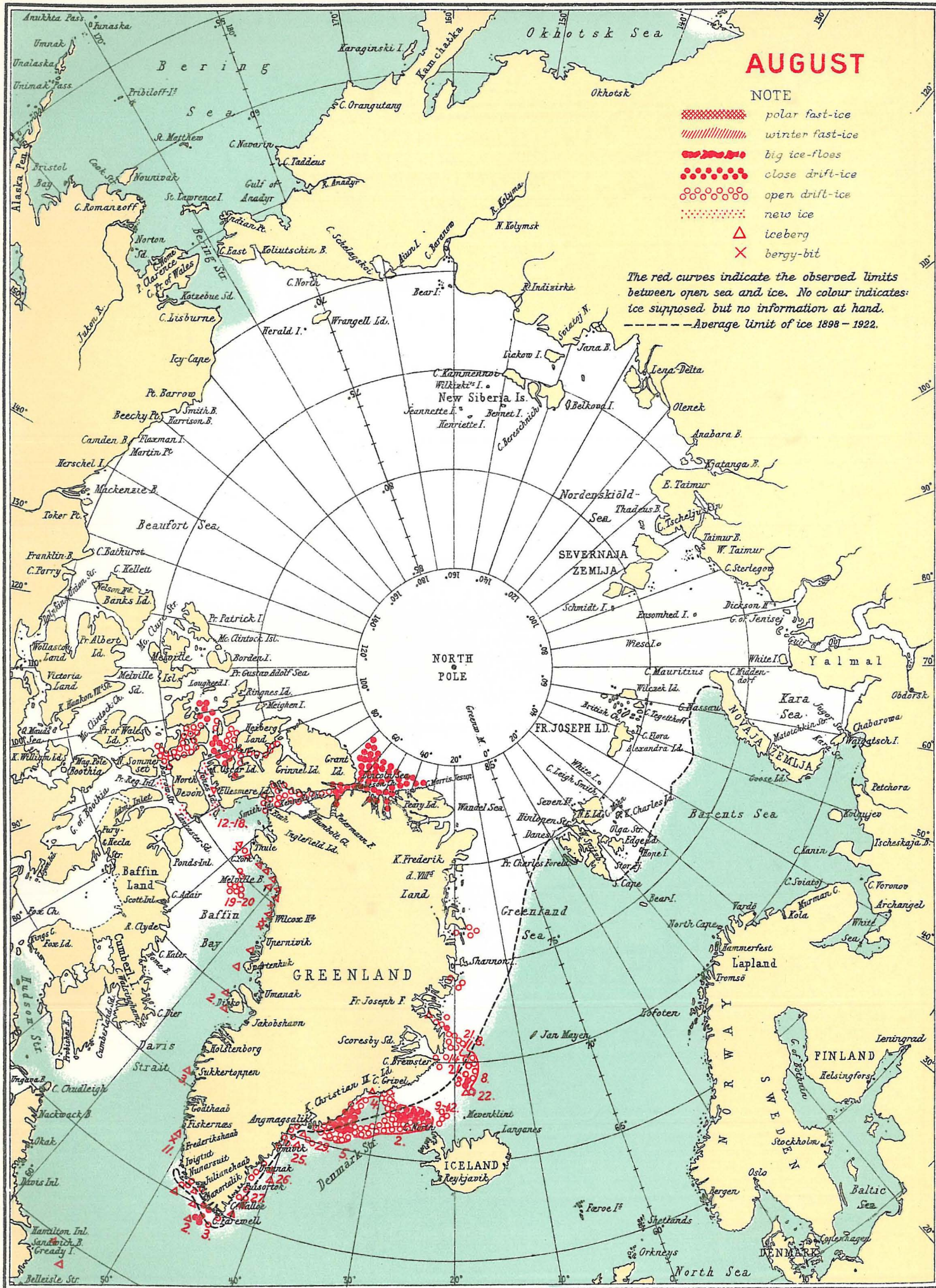


# INFORMATION RECEIVED CONCERNING THE ICE, 1952.



## AUGUST

NOTE

- ▨▨▨▨▨▨ polar fast-ice
- ▨▨▨▨▨▨▨▨▨▨ winter fast-ice
- ▨▨▨▨▨▨▨▨ big ice-floes
- close drift-ice
- open drift-ice
- new ice
- △ iceberg
- × bergy-bit

The red curves indicate the observed limits between open sea and ice. No colour indicates ice supposed but no information at hand.  
 -----Average limit of ice 1898 - 1922.