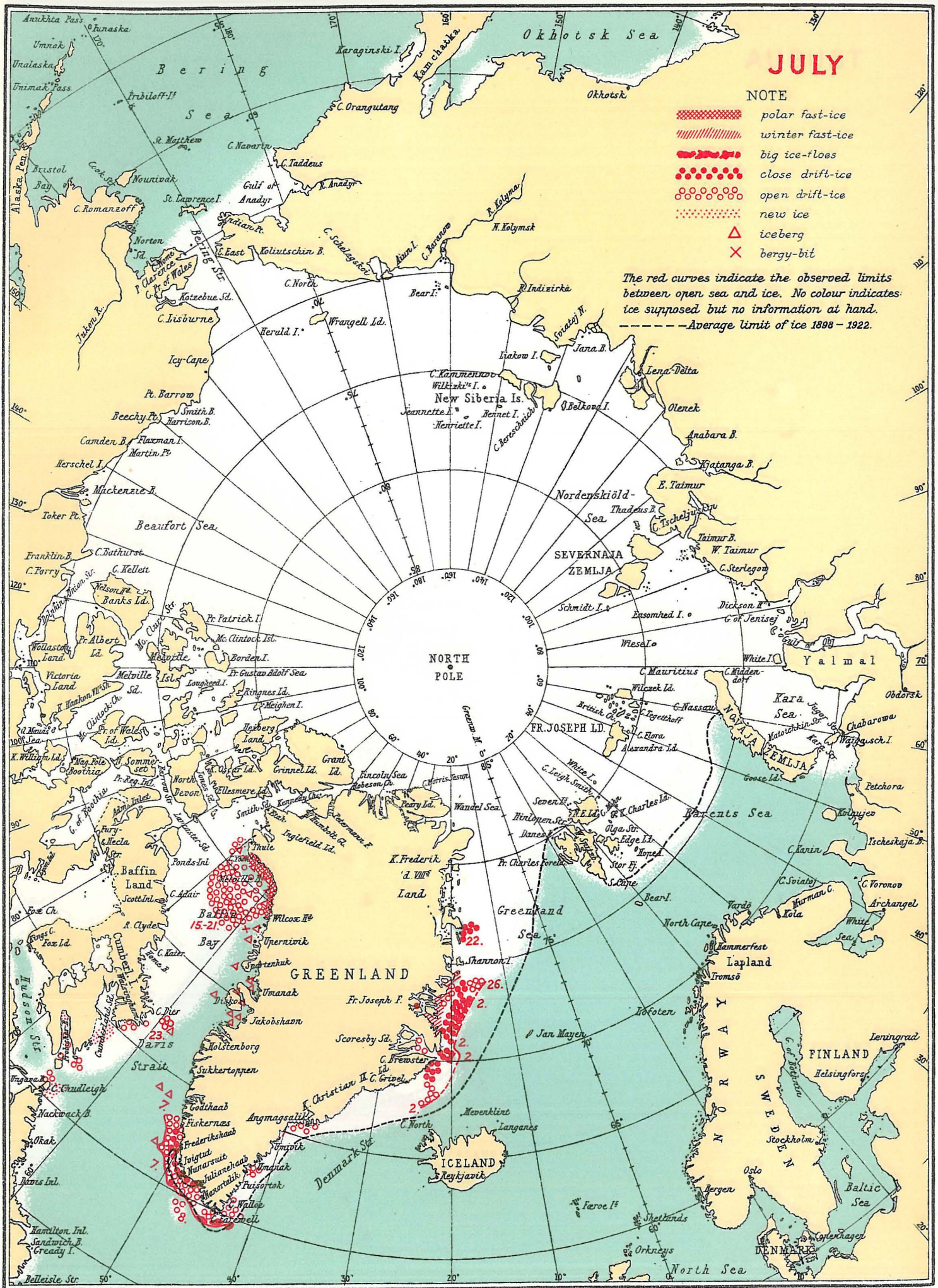


INFORMATION RECEIVED CONCERNING THE ICE, 1952.



JULY

NOTE

-  polar fast-ice
-  winter fast-ice
-  big ice-floes
-  close drift-ice
-  open drift-ice
-  new ice
-  iceberg
-  bergy-bit

The red curves indicate the observed limits between open sea and ice. No colour indicates ice supposed but no information at hand.
 -----Average limit of ice 1898 - 1922.