

PUBLIKATIONER
FRA
DET DANSKE METEOROLOGISKE INSTITUT
CHARLOTTENLUND

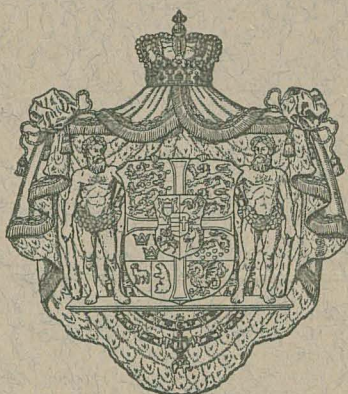


ÅRBØGER

ISFORHOLDENE I DE ARKTISKE HAVE
THE STATE OF THE ICE IN THE ARCTIC SEAS

1950

TILLÆG TIL NAUTISK-METEOROLOGISK ÅRBOG 1950
APPENDIX TO THE NAUTICAL-METEOROLOGICAL ANNUAL 1950

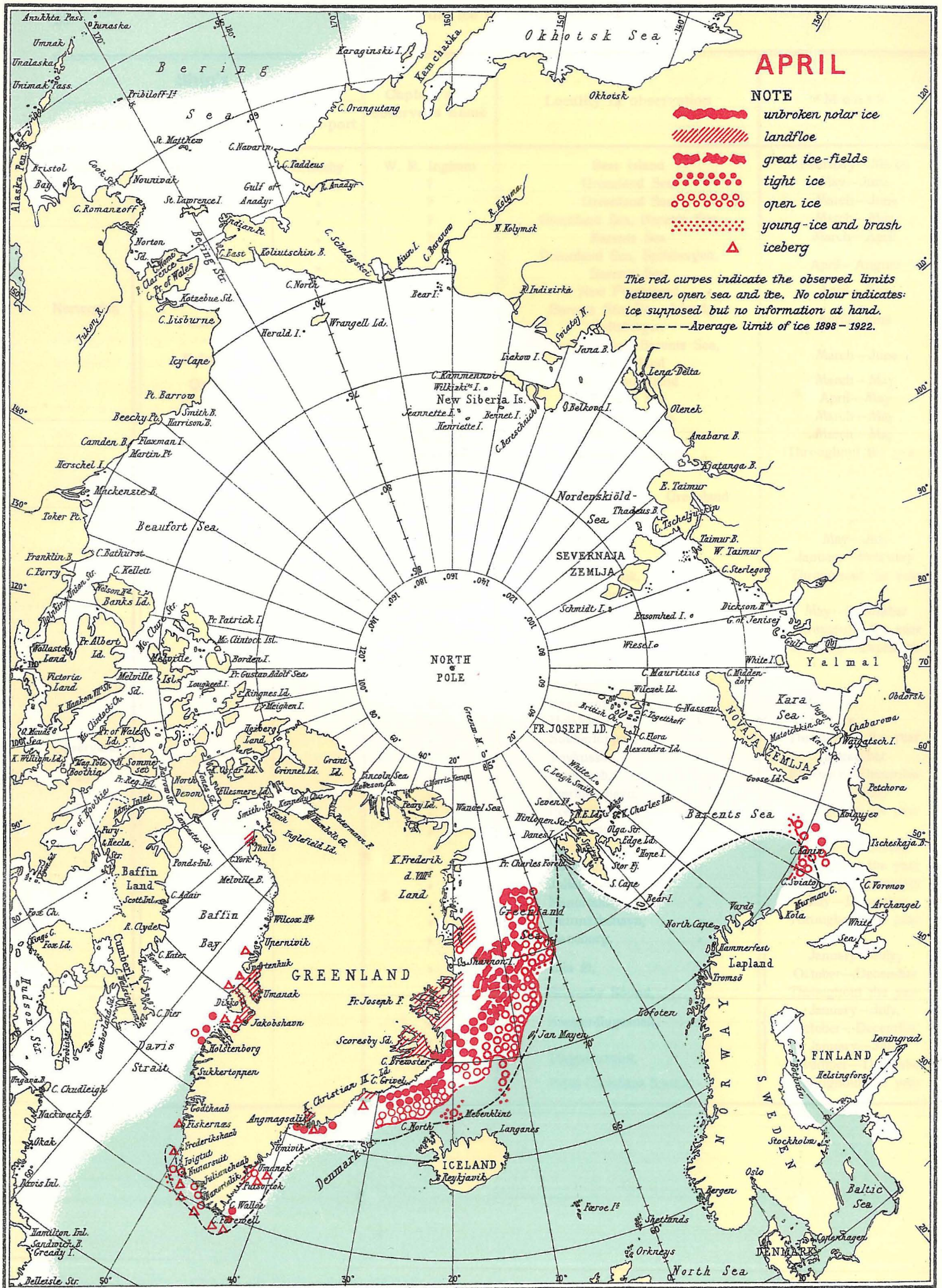


I KOMMISSION HOS G. E. C. GAD, KØBENHAVN

TRYKT I HØRSHOLM BOGTRYKKERI

1953

INFORMATION RECEIVED CONCERNING THE ICE, 1950.



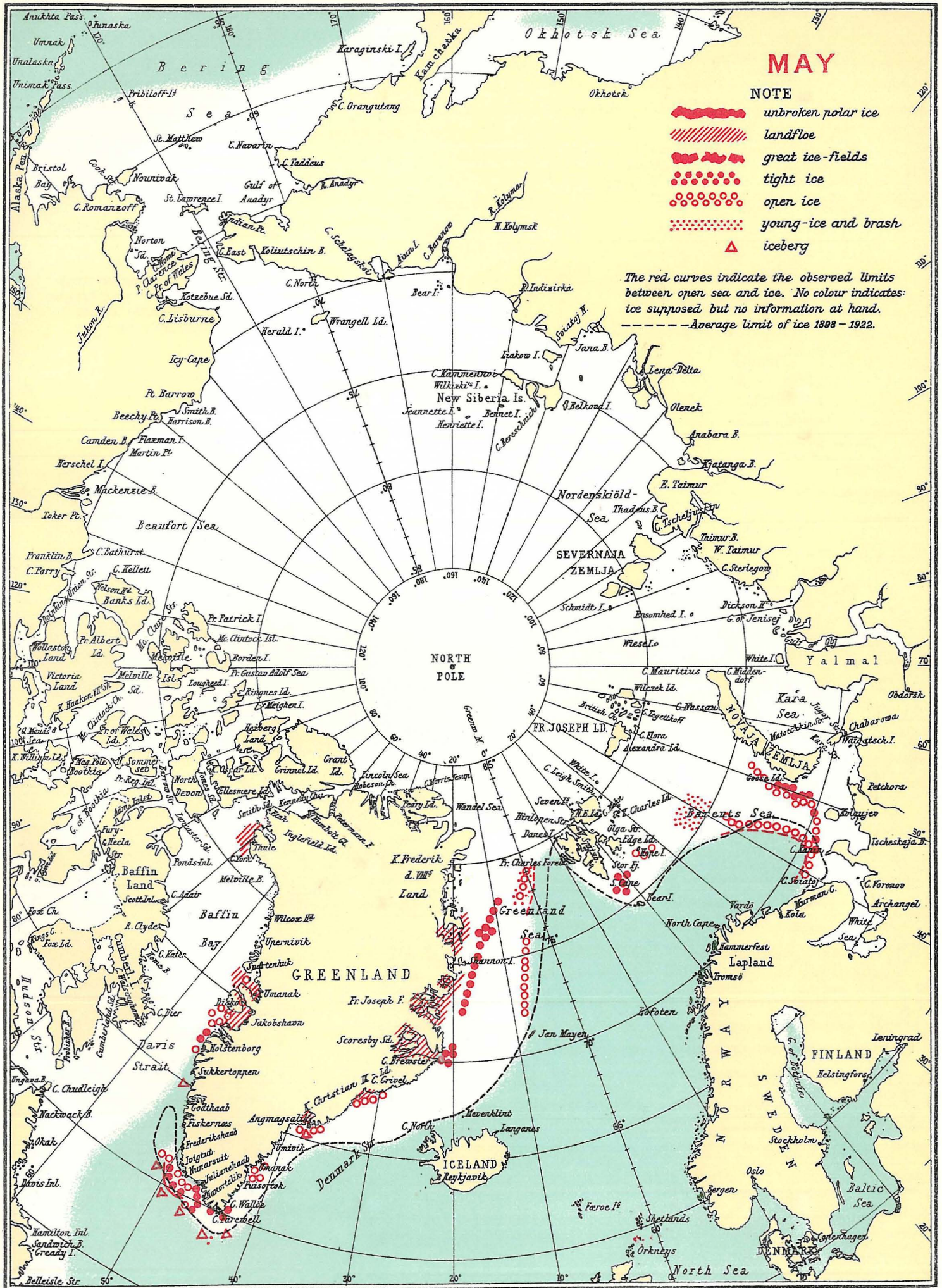
APRIL

NOTE

-  unbroken polar ice
-  landfloe
-  great ice-fields
-  tight ice
-  open ice
-  young-ice and brash
-  iceberg

The red curves indicate the observed limits between open sea and ice. No colour indicates ice supposed but no information at hand.
 - - - - - Average limit of ice 1898 - 1922.

INFORMATION RECEIVED CONCERNING THE ICE, 1950.



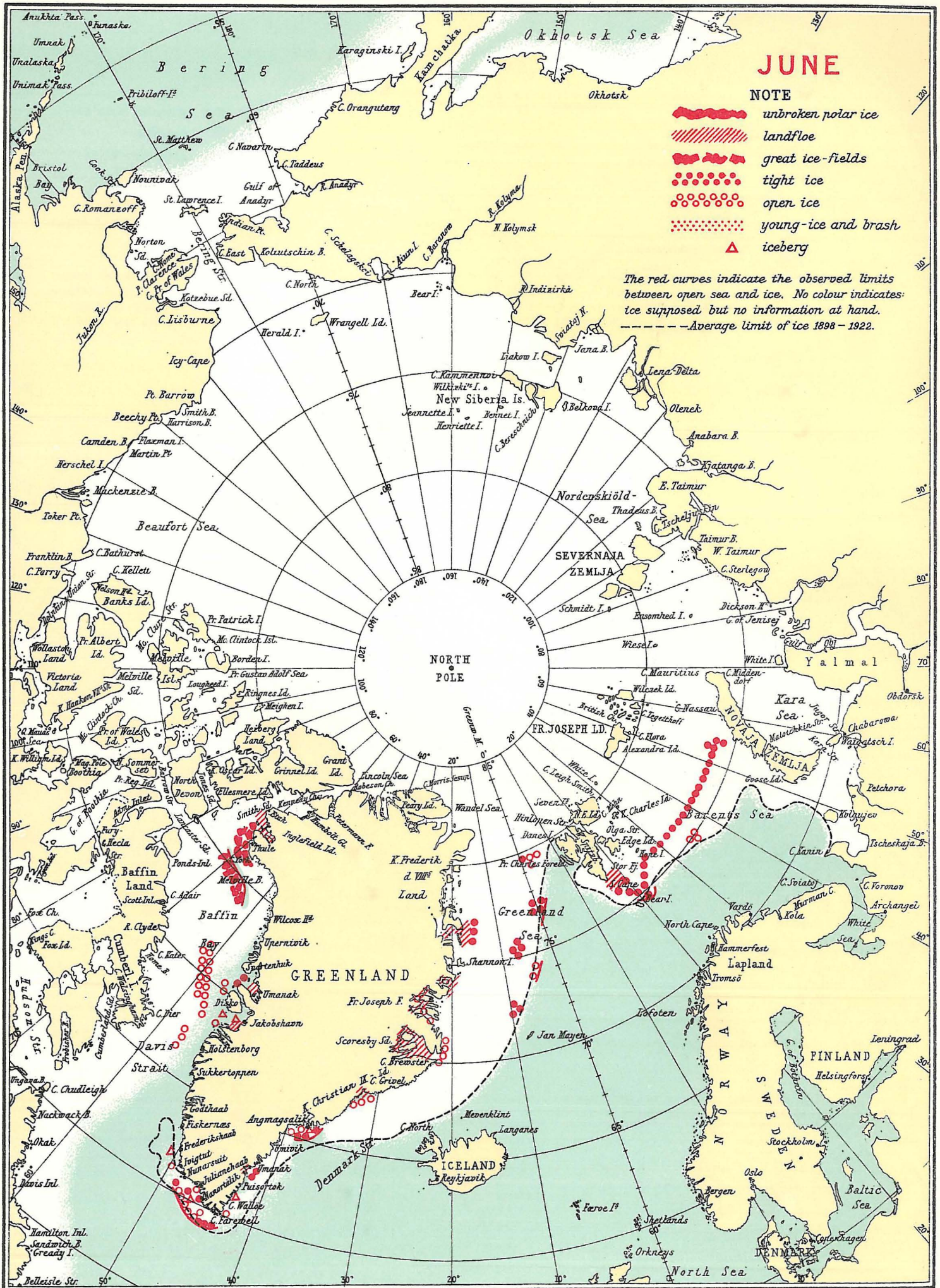
MAY

NOTE

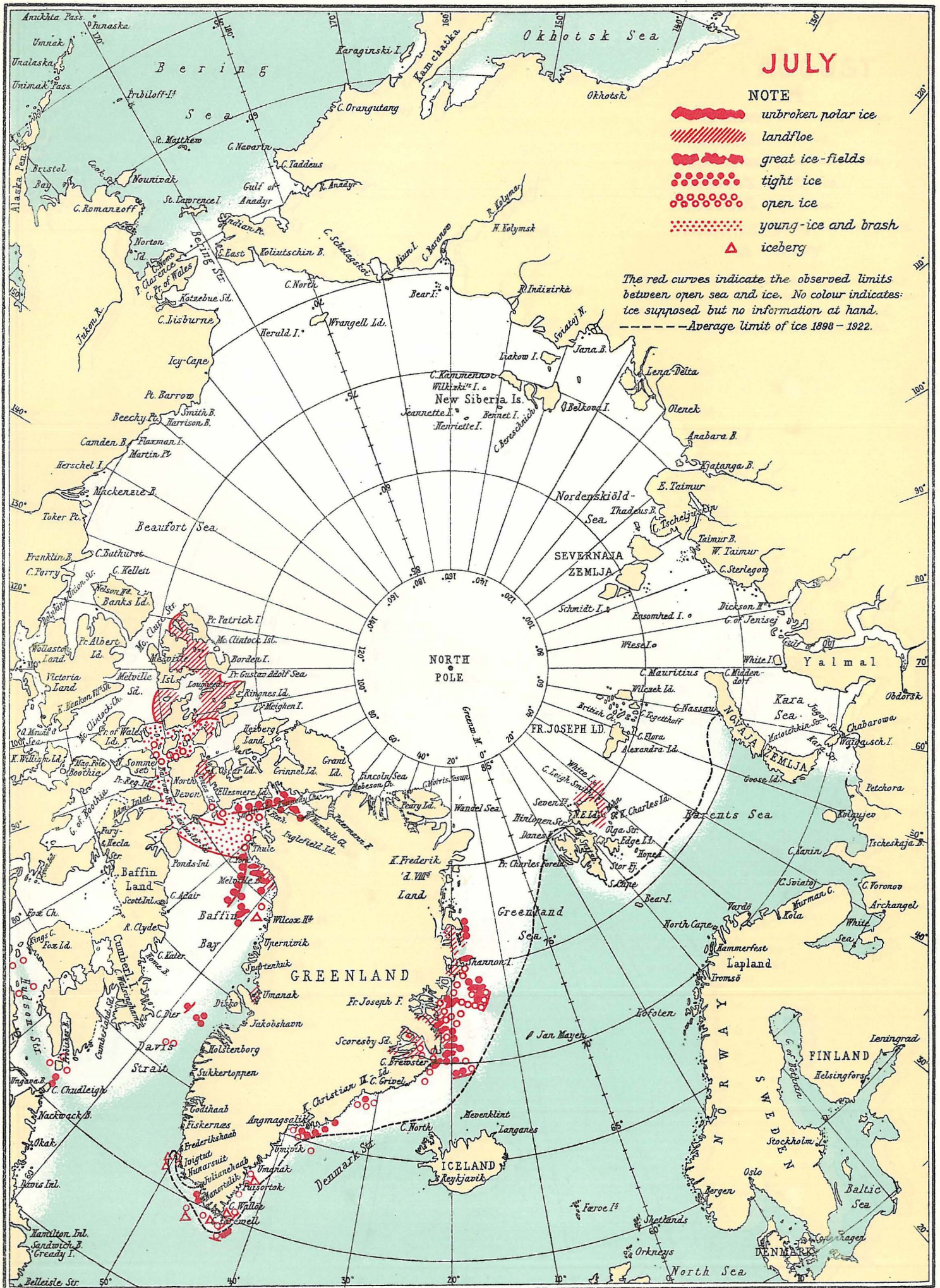
- unbroken polar ice
- ▨ landfloe
- great ice-fields
- tight ice
- open ice
- ◐ young-ice and brash
- ▲ iceberg

The red curves indicate the observed limits between open sea and ice. No colour indicates ice supposed but no information at hand.
 - - - - - Average limit of ice 1908 - 1922.

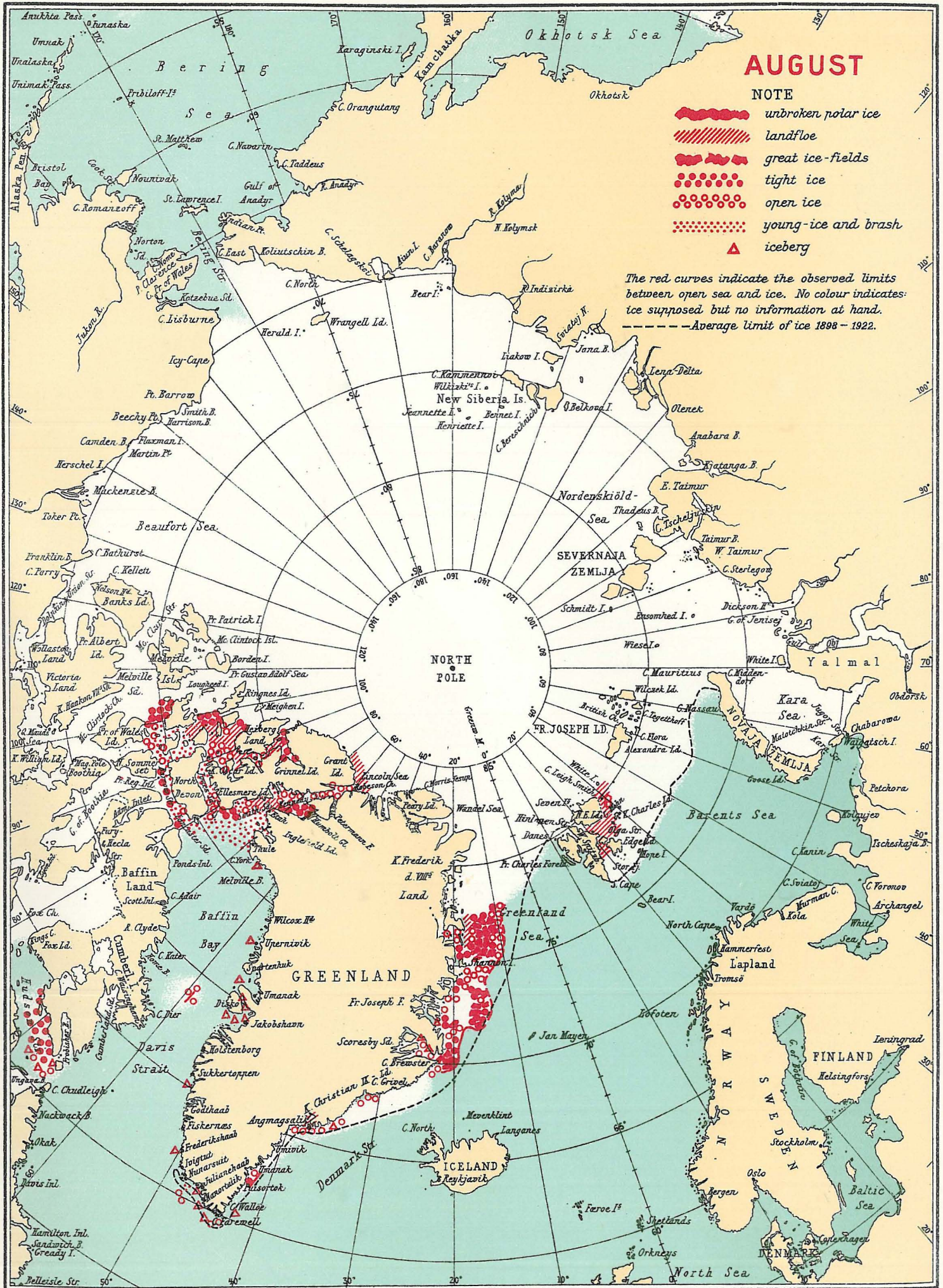
INFORMATION RECEIVED CONCERNING THE ICE, 1950.



INFORMATION RECEIVED CONCERNING THE ICE, 1950.



INFORMATION RECEIVED CONCERNING THE ICE, 1950.



AUGUST

NOTE

- unbroken polar ice
- landfloe
- great ice-fields
- tight ice
- open ice
- young-ice and brash
- iceberg

The red curves indicate the observed limits between open sea and ice. No colour indicates ice supposed but no information at hand.
 ---Average limit of ice 1898 - 1922.