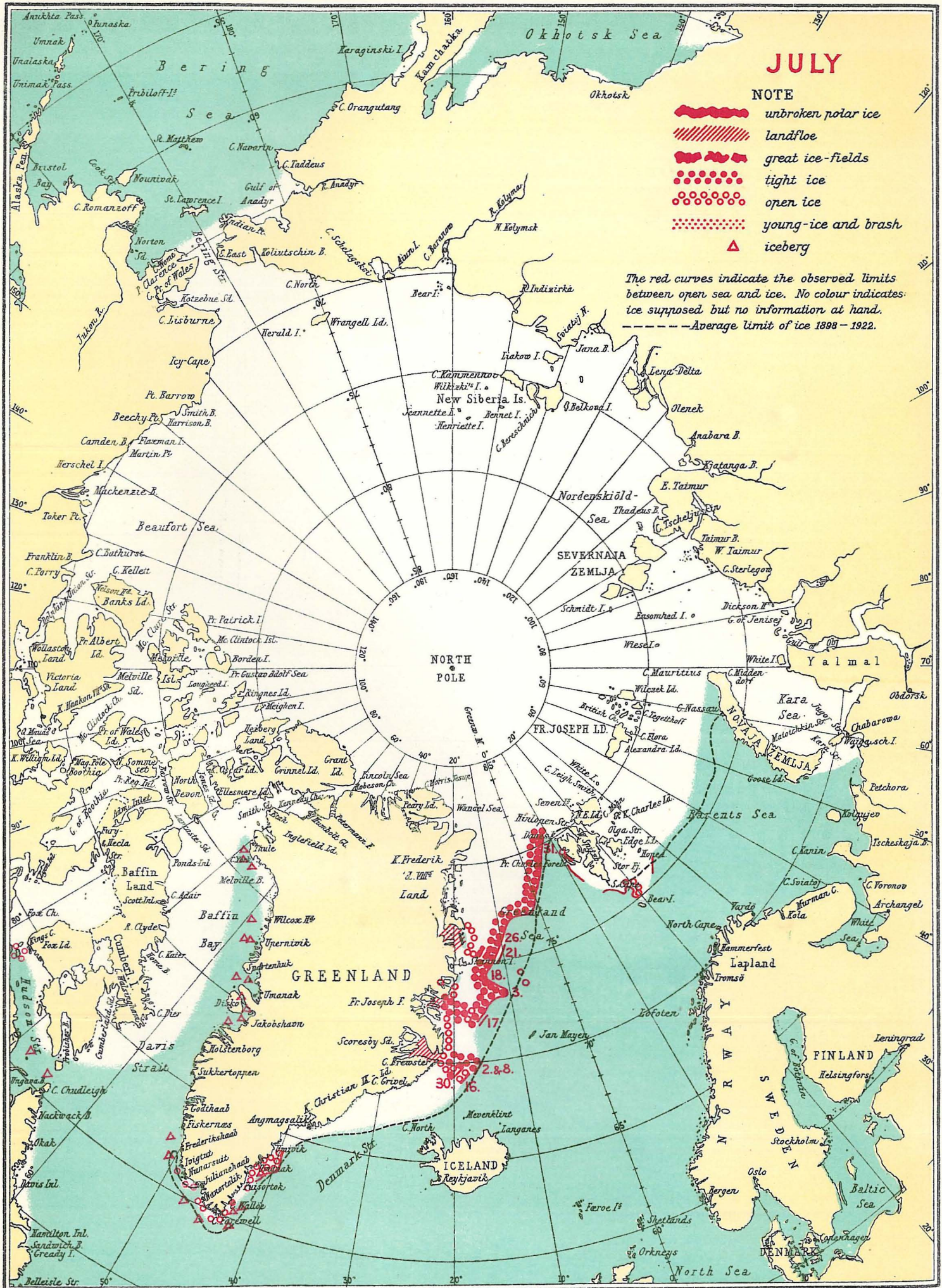


INFORMATION RECEIVED CONCERNING THE ICE, 1948.



JULY

NOTE

- unbroken polar ice
- ▨ landfloe
- great ice-fields
- tight ice
- open ice
- ⋯ young-ice and brash
- ▲ iceberg

The red curves indicate the observed limits between open sea and ice. No colour indicates ice supposed but no information at hand.
 --- Average limit of ice 1898 - 1922.