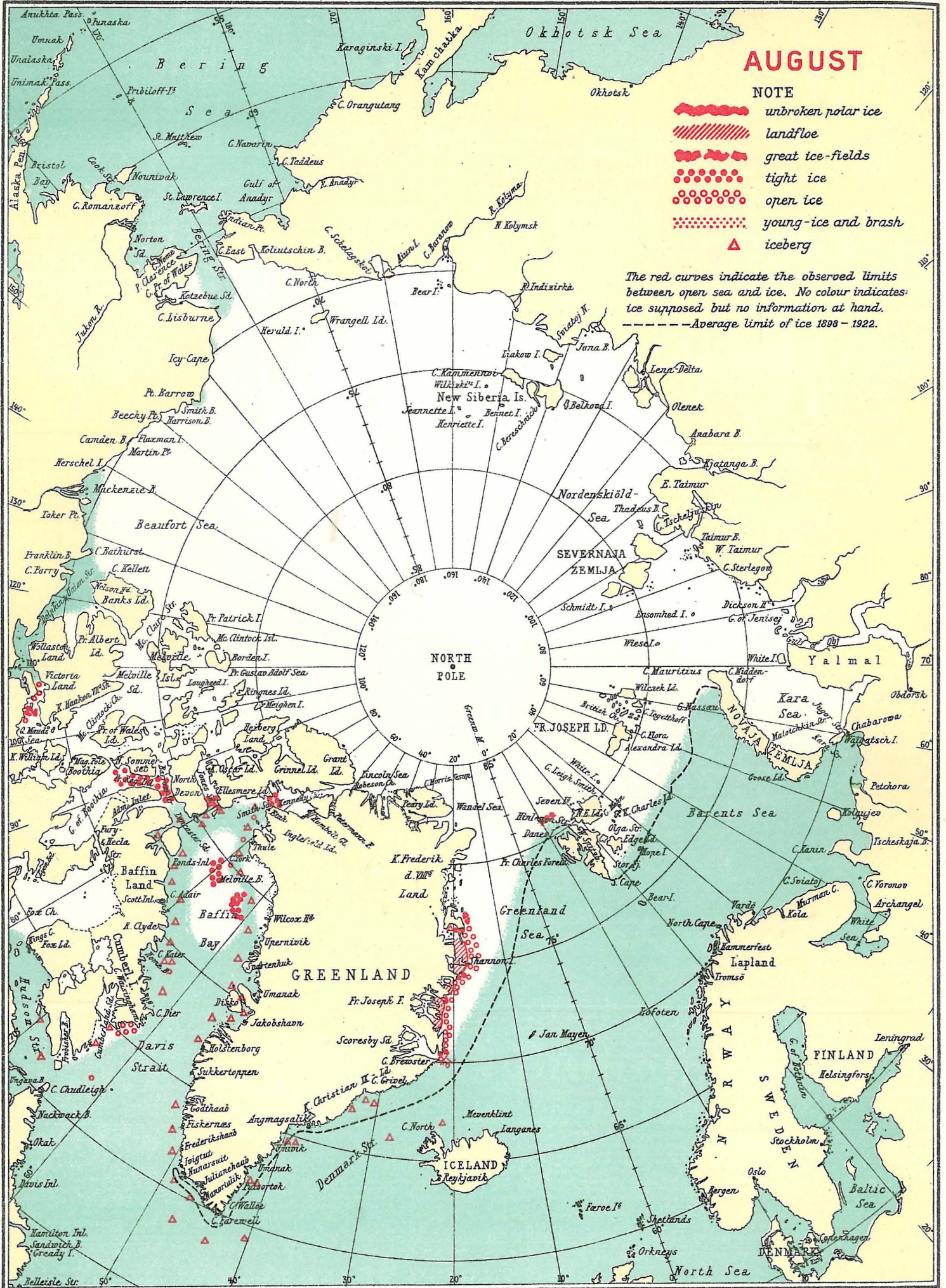


INFORMATION RECEIVED CONCERNING THE ICE, 1939.



AUGUST

NOTE

-  unbroken polar ice
-  landfloe
-  great ice-fields
-  tight ice
-  open ice
-  young-ice and brash
-  iceberg

The red curves indicate the observed limits between open sea and ice. No colour indicates ice supposed but no information at hand.
 ----- Average limit of ice 1898 - 1922.