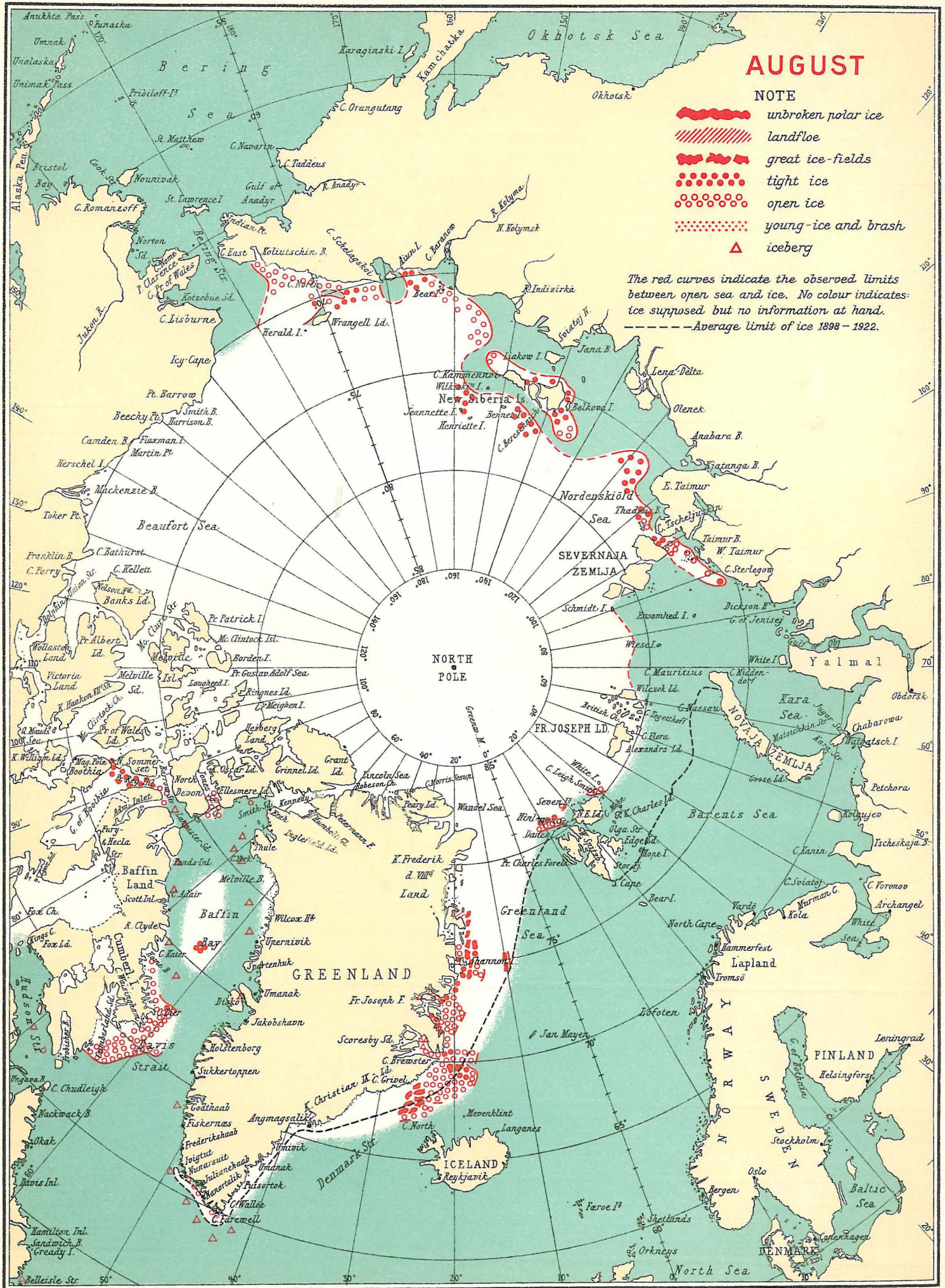


INFORMATION RECEIVED CONCERNING THE ICE, 1938.



AUGUST

NOTE

- unbroken polar ice
- ////// landfloe
- great ice-fields
- tight ice
- open ice
- young-ice and brash
- ▲ iceberg

The red curves indicate the observed limits between open sea and ice. No colour indicates ice supposed but no information at hand.
 -----Average limit of ice 1898 - 1922.