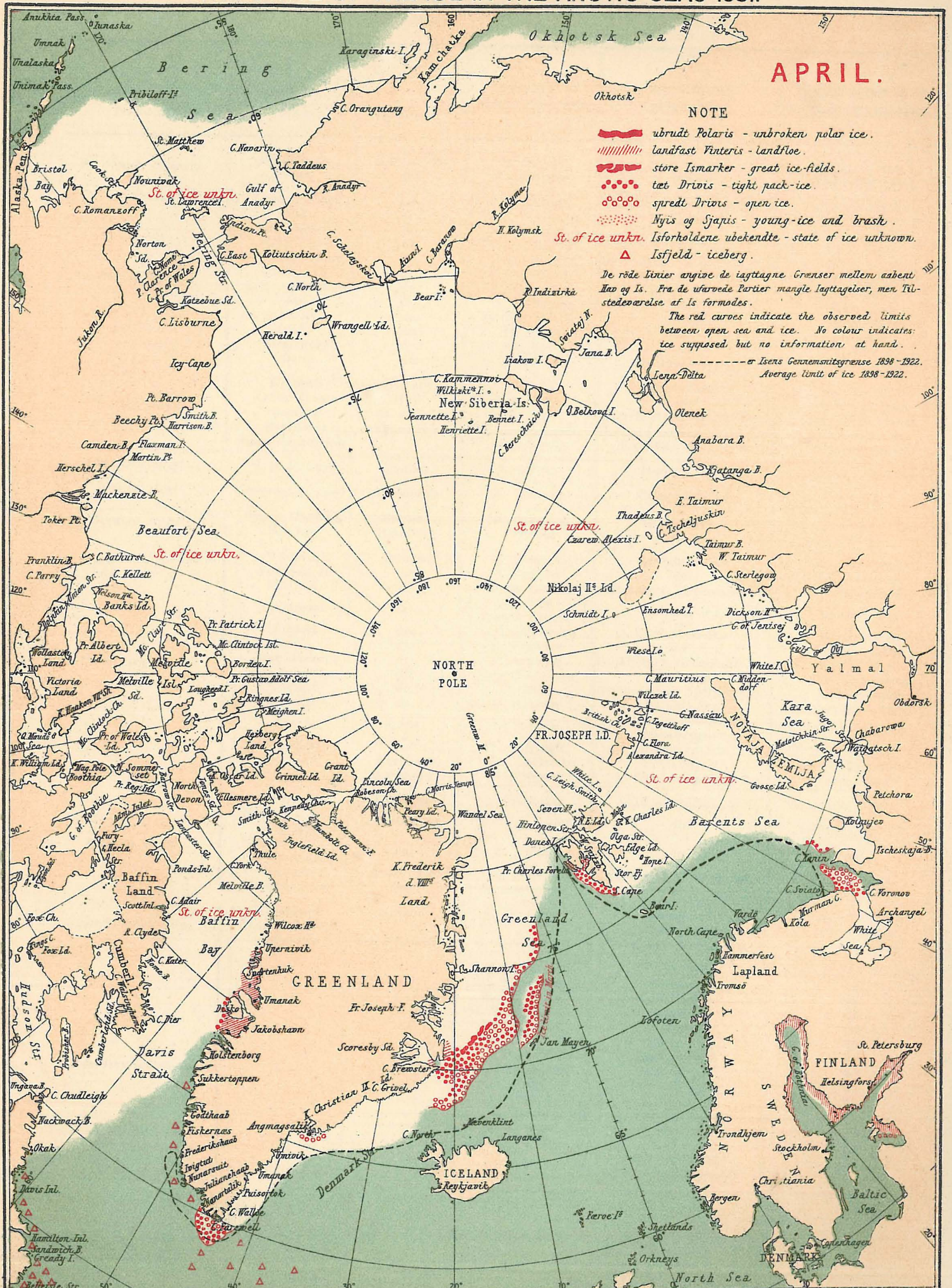


# ISFORHOLDENE I DE ARKTISKE HAVE 1931. THE STATE OF THE ICE IN THE ARCTIC SEAS 1931.



APRIL.

**NOTE**

- ubrudt Polaris - unbroken polar ice.
- ||||| landfast Vinteris - landfloe.
- store Ismarker - great ice-fields.
- tet Drivis - tight pack-ice.
- spredt Drivis - open ice.
- Nyis og Sjapis - young-ice and brash.
- △ Isfjeld - iceberg.

De røde Linier angive de lagtagne Grænser mellem aabent Hav og Is. Fra de varme Partier mangle lagtagelser, men Tilstedeværelse af Is formodes.  
The red curves indicate the observed limits between open sea and ice. No colour indicates ice supposed but no information at hand.

----- Isens Gennemsnitsgrænse 1898 - 1922.  
Average limit of ice 1898 - 1922.