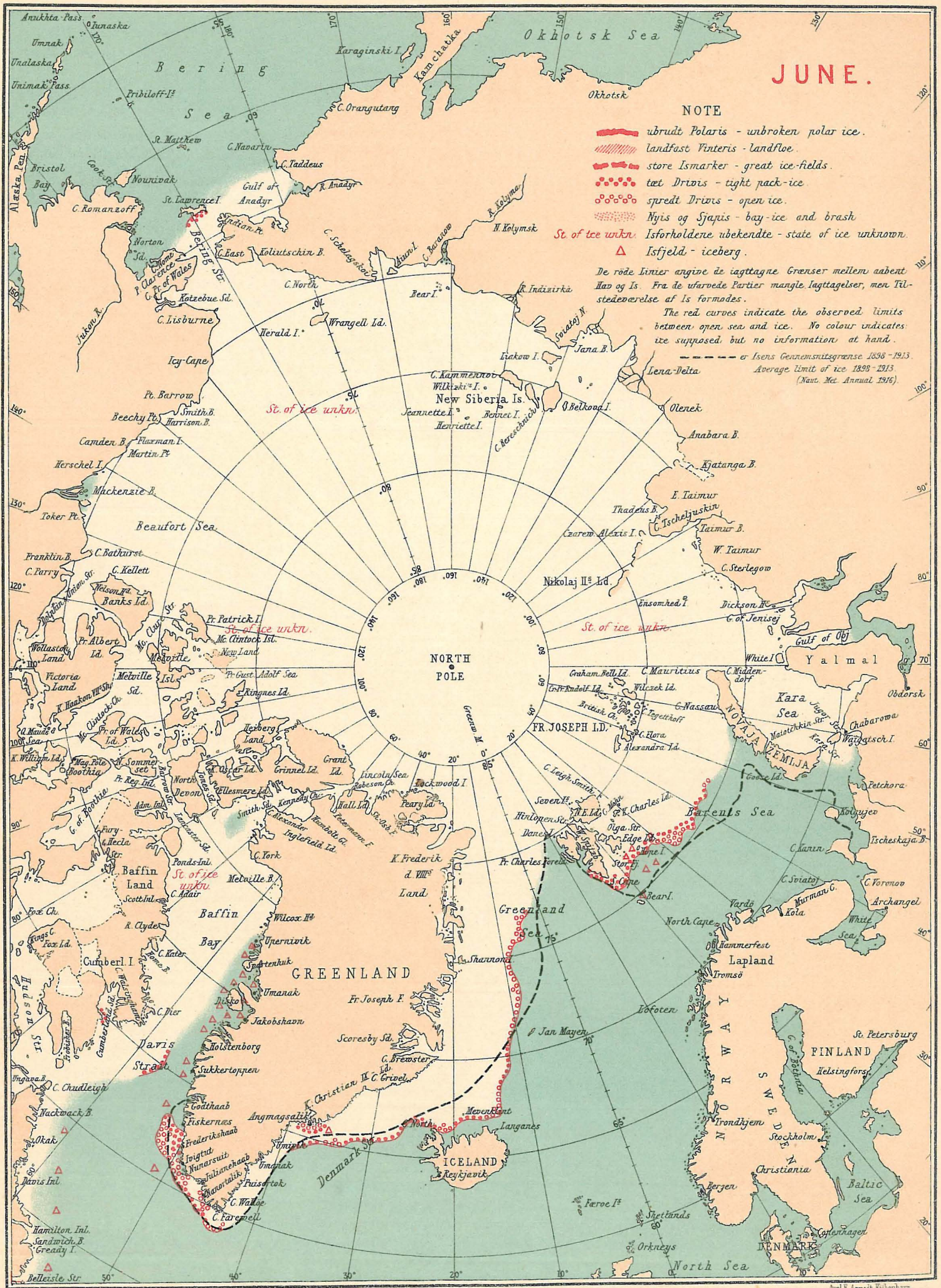


ISFORHOLDENE I DE ARKTISKE HAVE 1921. THE STATE OF THE ICE IN THE ARCTIC SEAS 1921.



JUNE.

NOTE

- ▬ ubrudt Polaris - unbroken polar ice.
- ▨ landfast Vinteris - landfloe.
- store Ismarker - great ice-fields.
- tæt Drøis - tight pack-ice.
- spredt Drøis - open ice.
- ▩ Nysis og Sjaris - bay-ice and brash.
- *St. of ice unkn.* Isforholdene ubekendte - state of ice unknown.
- △ Isfjeld - iceberg.

De røde Linier angive de iagttagne Grænser mellem aabent Hav og Is. Fra de ubroede Partier mangle iagttagelser, men Tilstedeværelse af Is formodes.

The red curves indicate the observed limits between open sea and ice. No colour indicates ice supposed but no information at hand.

--- Isens Gennemsnitsgrænse 1898-1913. Average limit of ice 1898-1913. (Naut. Met. Annual 1916).