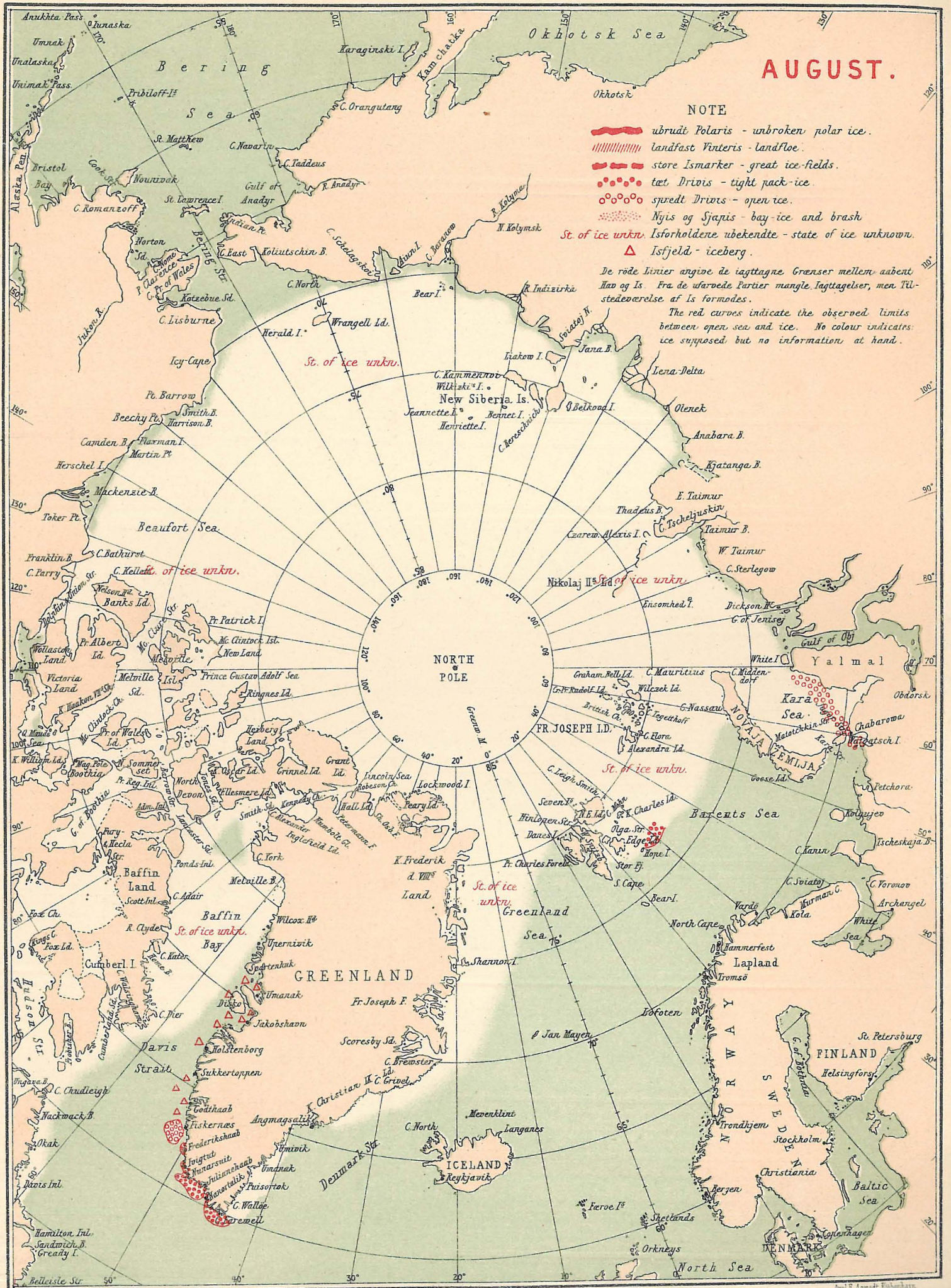


ISFORHOLDENE I DE ARKTISKE HAVE 1918.
THE STATE OF THE ICE IN THE ARCTIC SEAS 1918.

AUGUST.



NOTE

- ubrudt Polaris - unbroken polar ice.
- ||||| landfast Vinteris - landfast ice.
- store Ismarker - great ice-fields.
- tæt Drivis - tight pack-ice
- spredt Drivis - open ice.
- Nyis og Sjapis - bay-ice and brash
- St. of ice unkn. Isforholdene ubekendte - state of ice unknown.
- ▲ Isfjeld - iceberg.

De røde Linier angive de iagttagne Grænser mellem åbent Hav og Is. Fra de ufarvede Partier mangler Iagttagelser, men Tilstedeværelse af Is formodes.
 The red curves indicate the observed limits between open sea and ice. No colour indicates ice supposed but no information at hand.