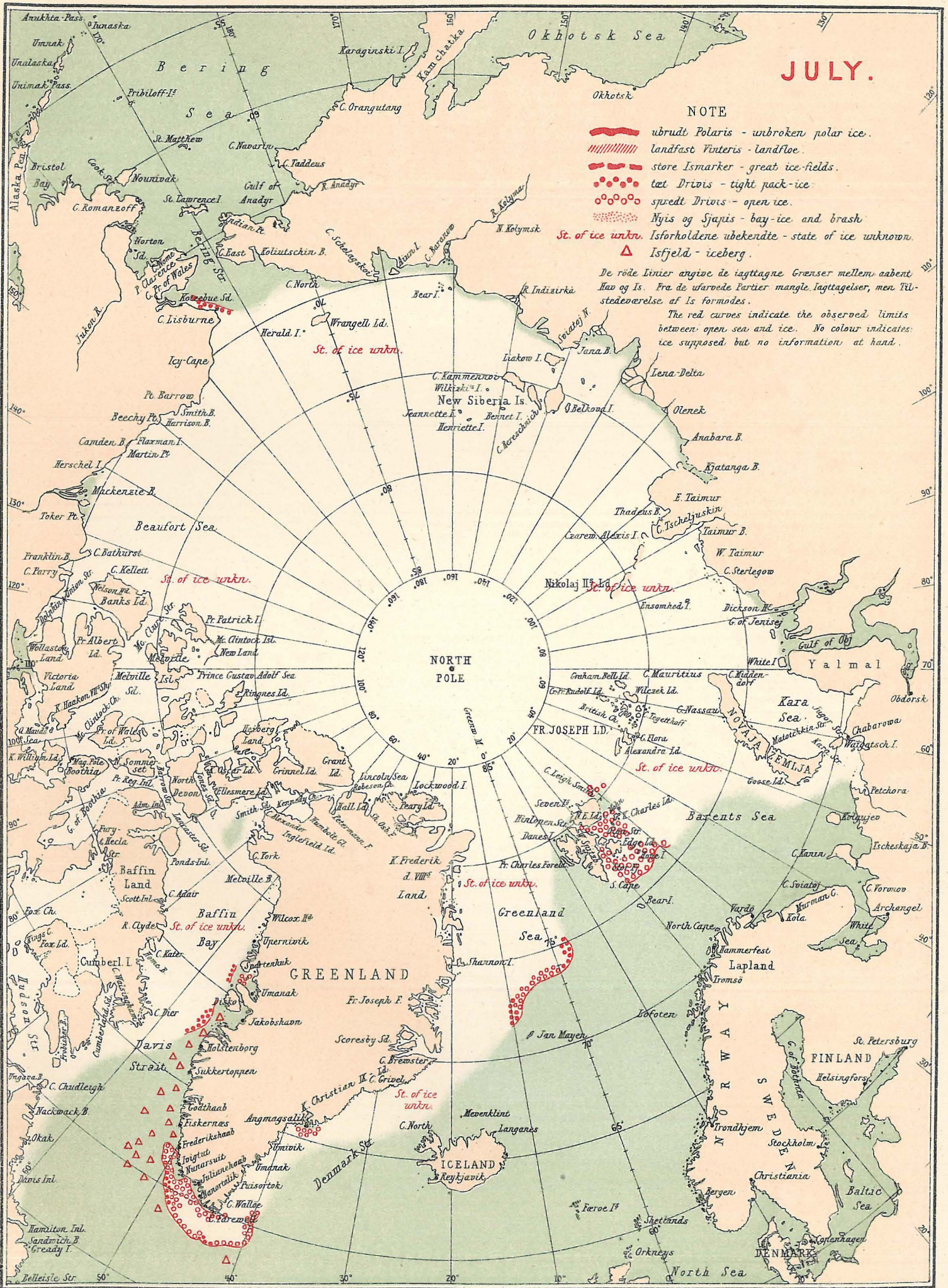


# ISFORHOLDENE I DE ARKTISKE HAVE 1918. THE STATE OF THE ICE IN THE ARCTIC SEAS 1918.



JULY.

**NOTE**

- ~~~~~ ubrudt Polaris - ubroken polar ice.
- ||||| landfast Vinteris - landfloe.
- store Ismarker - great ice-fields.
- tæt Drivis - tight pack-ice.
- spredt Drivis - open ice.
- △ Nyis og Sjapis - bay-ice and brash.
- △ Isfjeld - iceberg.

De røde Linier angive de iagttagne Grænser mellem aabent Hav og Is. Fra de warvede Partier mangle lagtagelser, men Tilstedeværelse af Is formodes.  
The red curves indicate the observed limits between open sea and ice. No colour indicates ice supposed but no information at hand.