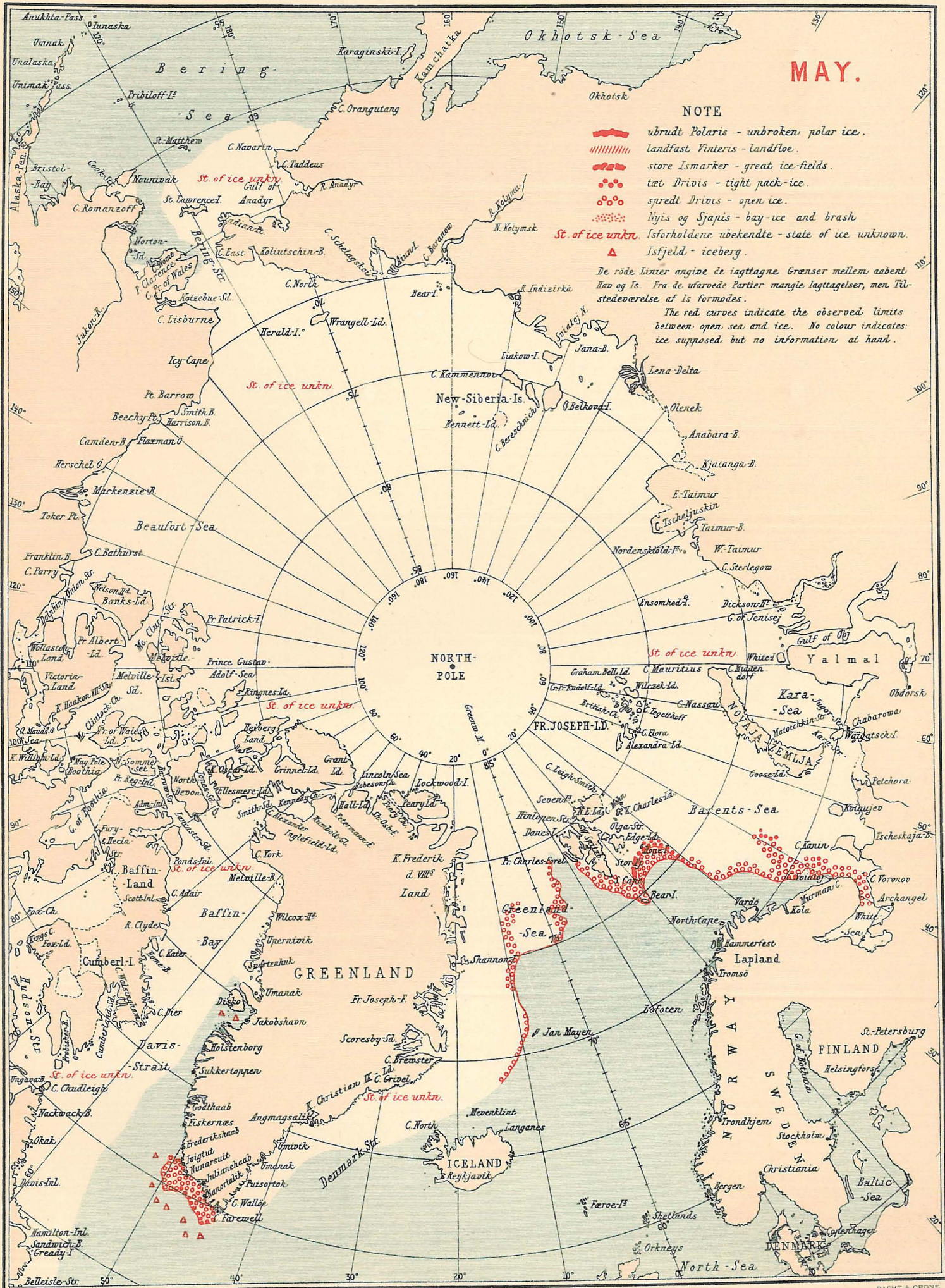








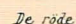
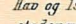
THE STATE OF THE ICE IN THE ARCTIC SEAS 1912.

PUBLISHED BY THE DANISH METEOROLOGICAL INSTITUTE.



MAY.

NOTE

-  ubrudt Polaris - unbroken polar ice.
-  landfast Vinteris - landfloe.
-  store Ismarker - great ice-fields.
-  tæt Drivis - tight pack-ice.
-  spredt Drivis - open ice.
-  Nyis og Sjapis - bay-ice and brash
-  Isforholdene ubekendte - state of ice unknown.
-  Isfjeld - iceberg.

De røde Linier angive de lagtagne Grænser mellem aabent Hav og Is. Fra de waarøde Partier mangie lagttagelser, men Tilstedeværelse af Is formodes.

The red curves indicate the observed limits between open sea and ice. No colour indicates ice supposed but no information at hand.