

PUBLIKATIONER  
FRA  
DET DANSKE METEOROLOGISKE INSTITUT  
CHARLOTTENLUND

---

ÅRBØGER

---

ISFORHOLDENE I DE ARKTISKE HAVE  
THE STATE OF THE ICE IN THE ARCTIC SEAS

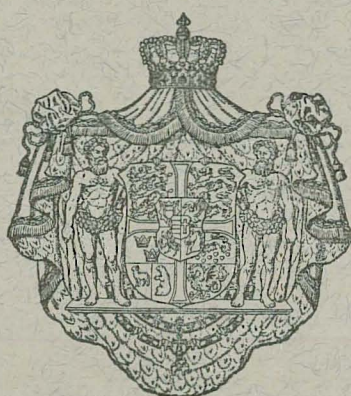
1955



---

TILLÆG TIL NAUTISK-METEOROLOGISK ÅRBOG 1955  
APPENDIX TO THE NAUTICAL-METEOROLOGICAL ANNUAL 1955

---

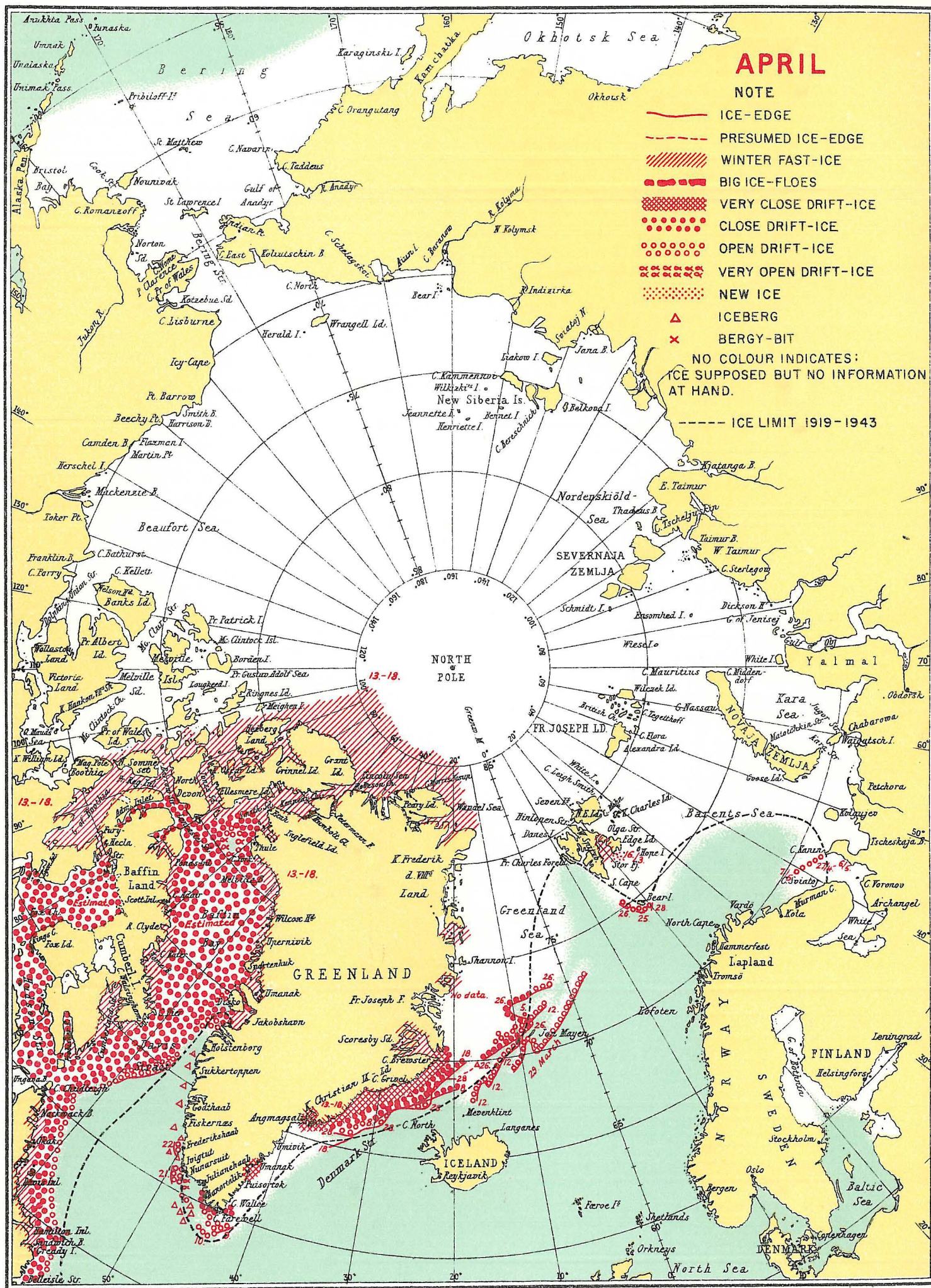


TRYKT I HØRSHOLM BOGTRYKKERI

1958



## INFORMATION RECEIVED CONCERNING THE ICE, 1955.





**MAY**

**NOTE**

- ICE-EDGE
- PRESUMED ICE-EDGE
- WINTER FAST-ICE
- BIG ICE-FLOES
- VERY CLOSE DRIFT-ICE
- CLOSE DRIFT-ICE
- OPEN DRIFT-ICE
- VERY OPEN DRIFT-ICE
- NEW ICE
- ICEBERG
- BERGY-BIT

NO COLOUR INDICATES:  
ICE SUPPOSED BUT NO INFORMATION  
AT HAND.

----- ICE LIMIT 1919-1943

NOTE

ICE-EDGE

PRESUMED ICE-EDGE

WINTER FAST-ICE

## BIG ICE-FLOES

VERY CLOSE DRIFT-ICE

CLOSE DRIFT-ICE

OPEN DRIFT-ICE

VERY OPEN DRIFT-ICE

NEW ICE

ICEBERG

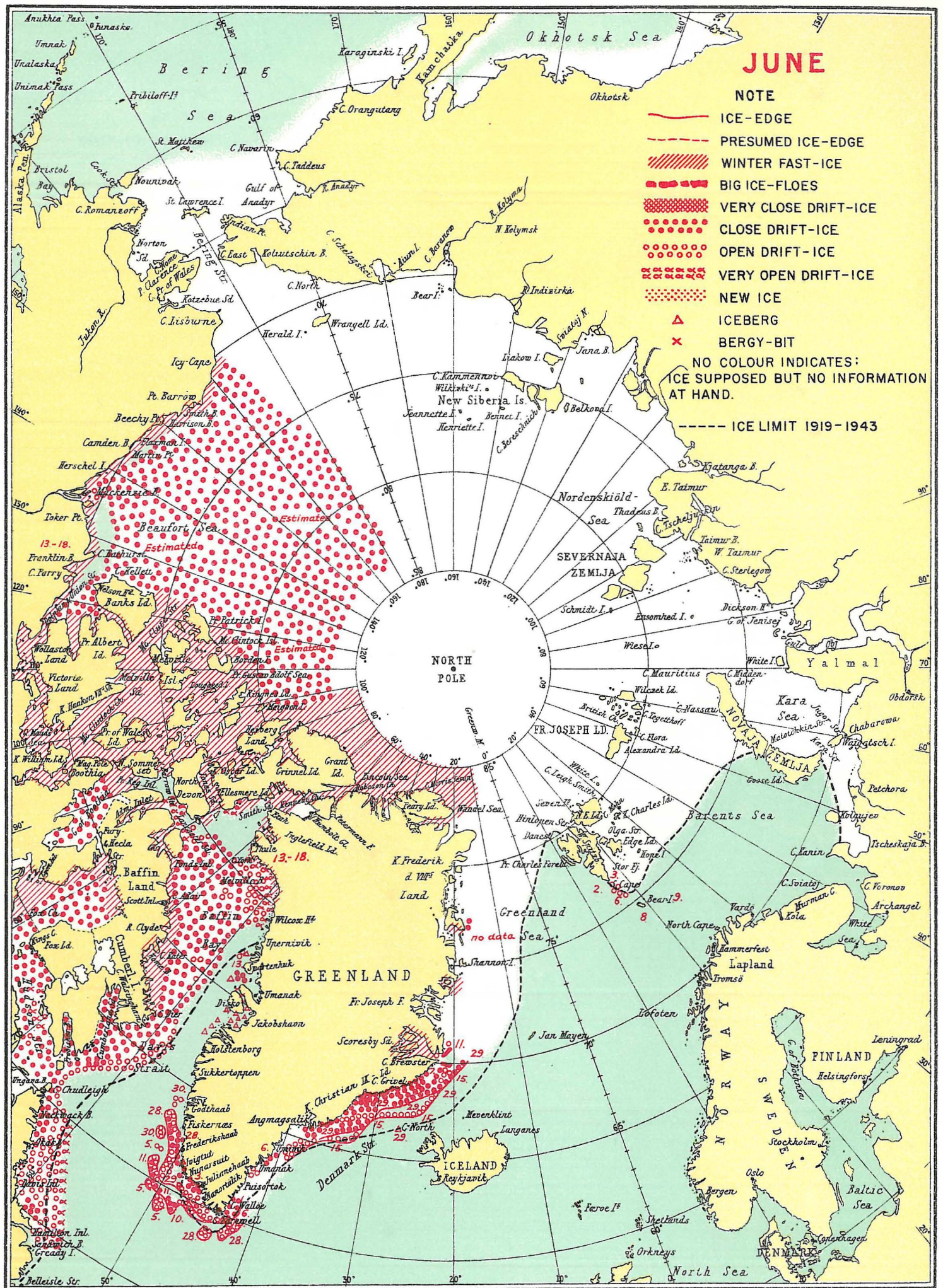
BERGY-BIT

NO COLOUR INDICATES:  
 IS SUPPOSED BUT NO INFORMATION  
 HAND.

----- ICE LIMIT 1919-1943

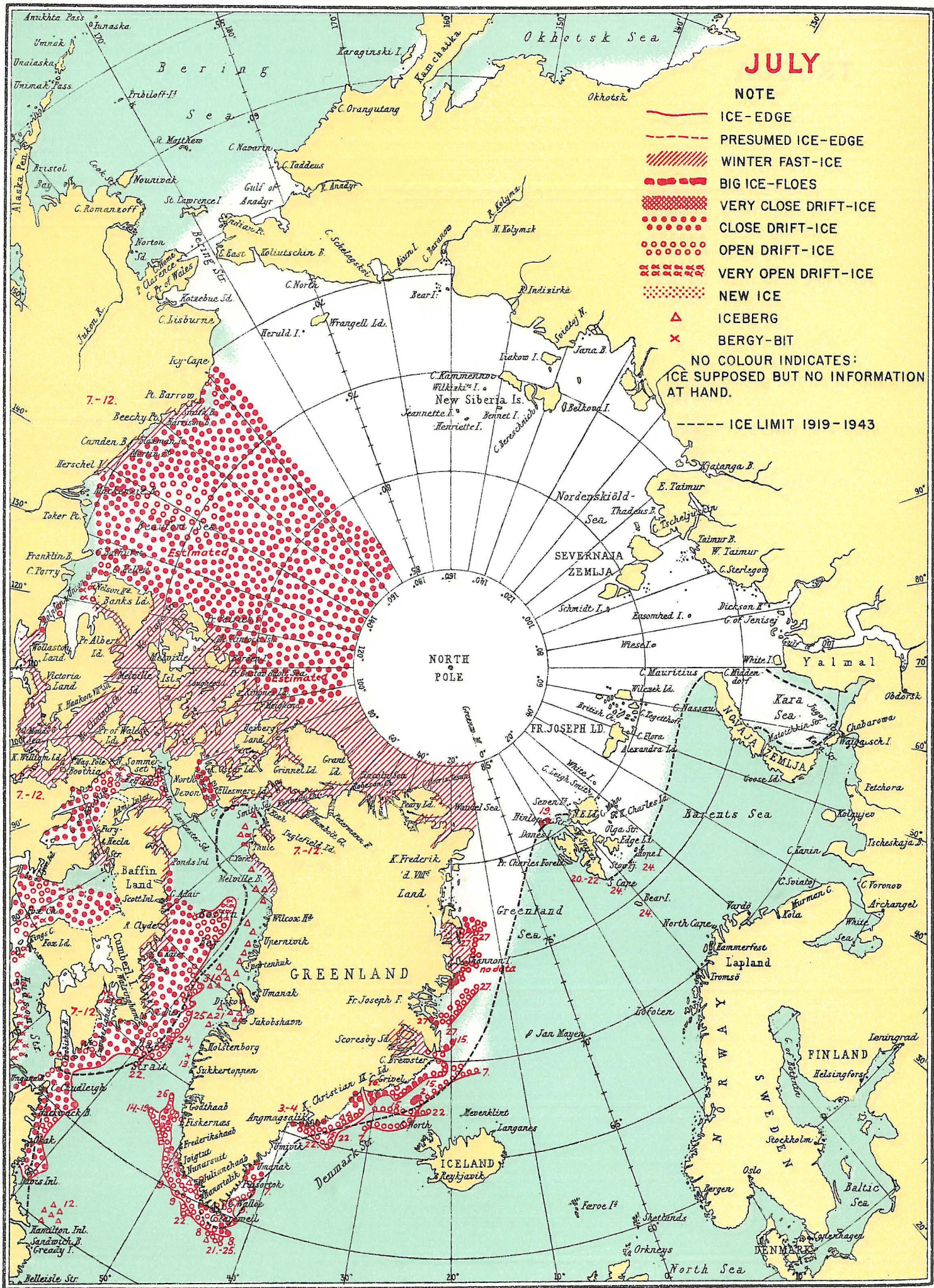


# INFORMATION RECEIVED CONCERNING THE ICE, 1955.





# INFORMATION RECEIVED CONCERNING THE ICE, 1955.





## INFORMATION RECEIVED CONCERNING THE ICE, 1955.

